

Hidden Cost of the Manhole: Rethinking Sewer Access for the 21st Century.

By: Jason Shriver – Channel Sales Manager for
Quickstream Solutions/ Poo Pit™

DID YOU KNOW ...

There are Only Two Types of Manholes?

- Problem Creating
- Problem Solving



UIC 2026 for Registered Attendees Only
Unauthorized Reproduction or Distribution Prohibited

The Manhole Problems

The traditional manhole is costing municipalities:

- Time
- Money
- Lives



The Problem

The traditional approach is costing you time and money

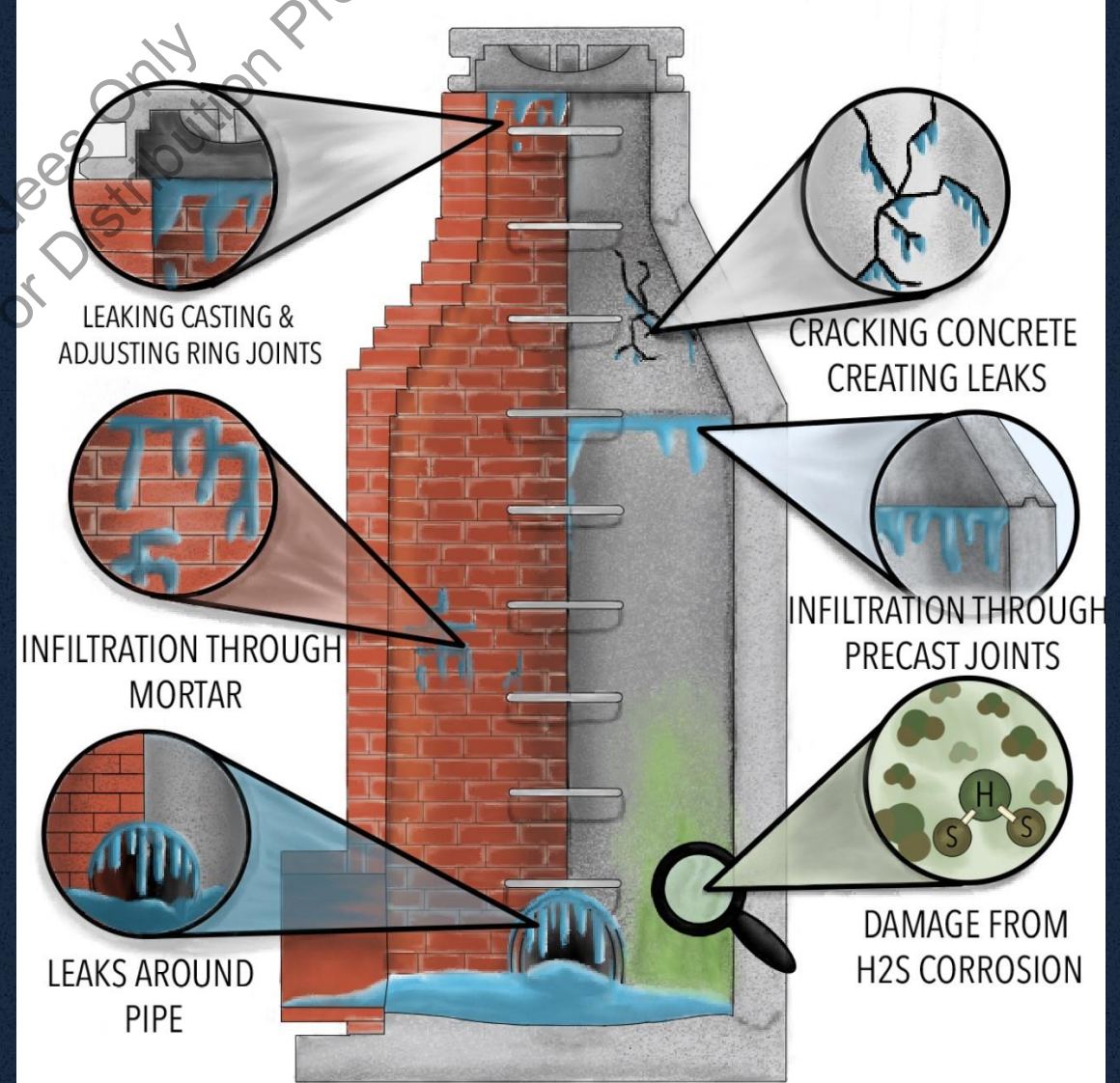


High installation and labor costs.

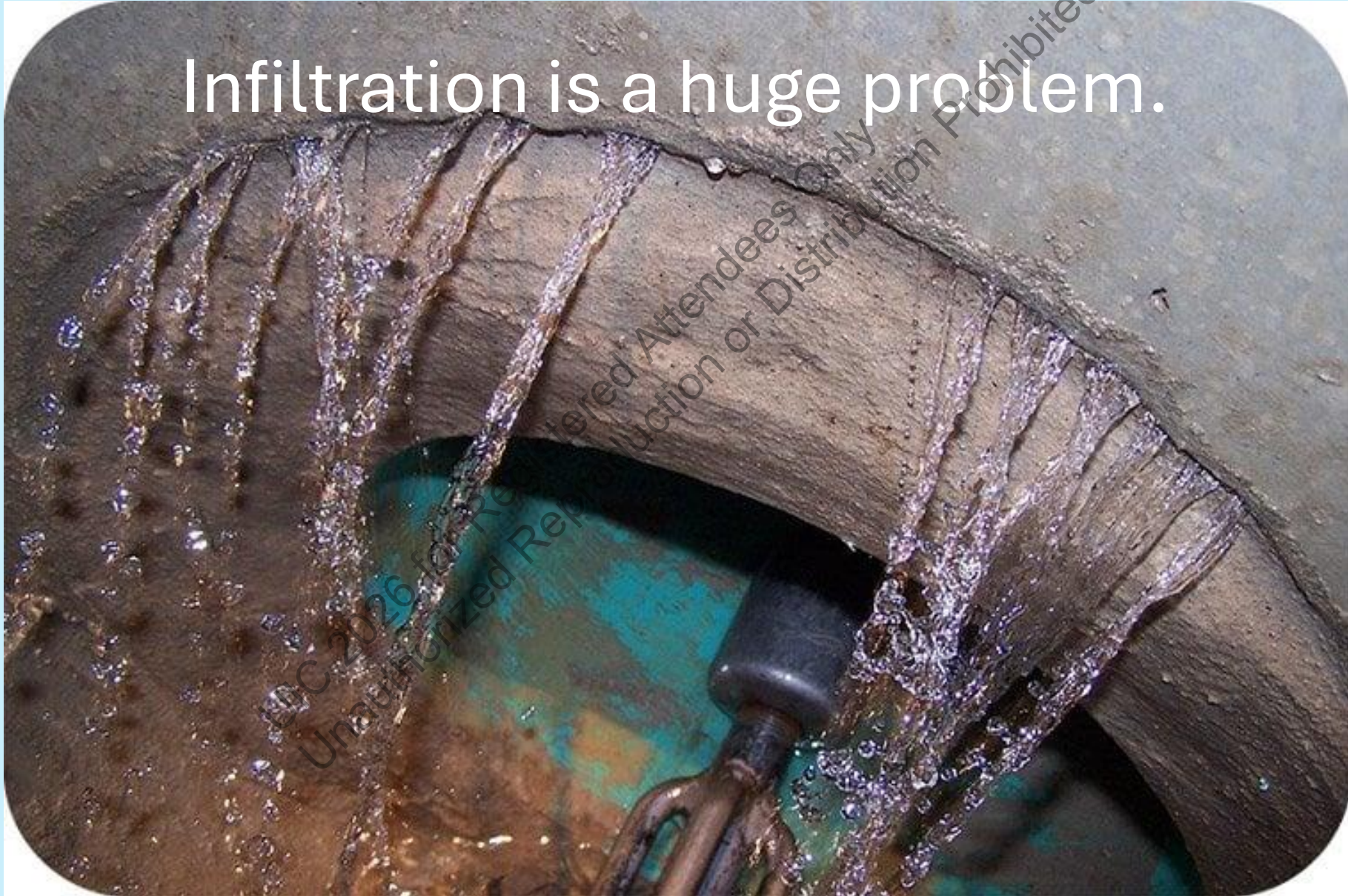
Expensive rehab-corrosion and infiltration issues.

Short lifespan with high carbon footprint. Dangerous, extreme safety hazards.

Municipalities Are Drowning in Inflow & Infiltration Costs



Infiltration is a huge problem.



It is costing utilities million of dollars.

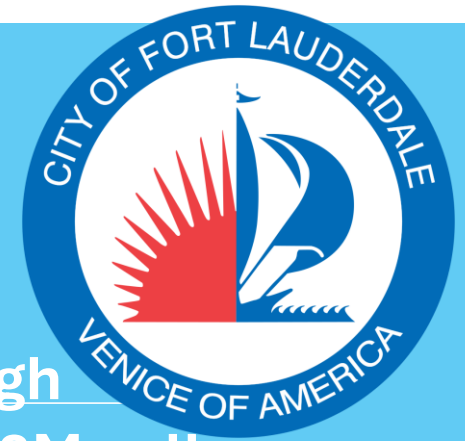


Benching is not effective or efficient, and it causes major problems in time.

UIC 2026 for Registered Attendees Only
Unauthorized Reproduction or Distribution Prohibited



Inflow & Infiltration – Ft. Lauderdale, FL



Avg. Daily Sewage Intake (Dry Day)

36.3M gallons

Avg. Daily Sewage Intake (Rain Day)

**Low
90M**

High

108M gallons

Daily I & I (Rain Day)

53.7M

71.7M gallons

Rain Days per Year

100

120

Annual I & I

5.37B

8.604B gallons

Cost to Treat (per 1,000 gallons)

\$4

\$7

Annual Cost of I & I

\$21.4M

\$60.228M

Q1C 2026 for Registered Attendees Only
Unauthorized Reproduction or Distribution Prohibited

INFLOW/INFILTRATION & EXFILTRATION

Just how big of a problem is this?



The Great Lakes make up 20% of the world's fresh surface water, & 84% of the fresh surface water in the US.

UIC 2026 for Registered Attendees Only
Unauthorized Reproduction or Distribution Prohibited

People only go into manholes to repair them or rehab them.

UIC 2026 for Registered Attendees Only
Unauthorized Reproduction or Distribution Prohibited



MUNICIPALTY PROBLEM #3

Occupational Deaths & Risk

KBTX News 3

3 workers found dead in manhole after exposure to toxic gas from sewage, official says

Aug 28 • By Vanessa Johnson & Stephanie Frazier



People.com

3 Dead After Inhaling Toxic Gas While Working in Manhole

Aug 29 • By Abigail Adams



ABC11

Construction worker falls into uncovered manhole in Harnett County

Jul 9



Wicked Local

What's an arc flash? Two Belmont Light workers hospitalized after manhole incident

Apr 8 • By Joanna Tzouvelis





**Larger
excavation,
bigger
equipment, more
work, more
dangerous.**



UIC 2026 for Registered Attendees Only
Unauthorized Reproduction or Distribution Prohibited

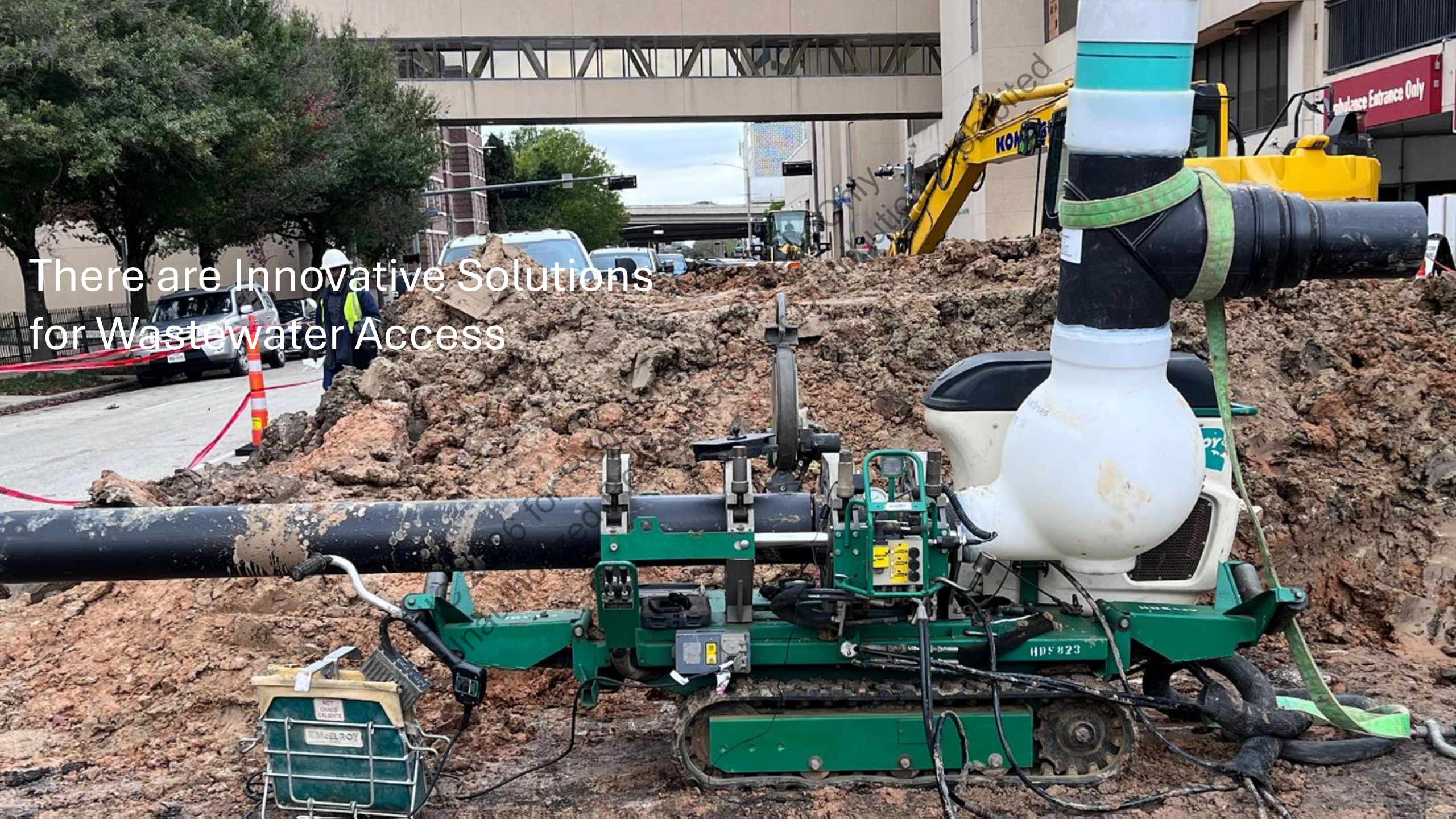


UIC 2026 for Registered Attendees Only
Unauthorized Reproduction or Distribution Prohibited



Maintenance has been done from the surface effectively for over 20 years.

There are Innovative Solutions
for Wastewater Access





POO PIT™



**12" SDR35 PVC
Riser Shaft**

**3M
Adhesive**

**24" Diameter
Roto-Molded PE
5/8" Thick**

**3M
Adhesive**

**Outlet Pipe
Integrally Molded
Bottom Dead Center
6" - 12"**

**Inlet Pipes
Cored and Welded
6" - 12"**

UIC 2026 for Registered Attendees Only
Unauthorized Reproduction or Distribution Prohibited



Mini Pit Features

- 2' Diameter access to surface
- All the same benefits as the Poo Pit
- Any grade any angle
- Same base as Poo Pit
- Direct access into riser shaft for drop connections
- Allows increased maintenance access

The 2025 American Society of Civil Engineers' (ASCE) annual Infrastructure Report Card is a stark reminder of the urgent need for significant and continued investment in water and wastewater infrastructure across the country.

The United States of America has a grade of C on its water, storm, and wastewater infrastructure combined, and a D+ in wastewater infrastructure alone.

We Keep doing the same things that we have done for over 200 years, why are regulators and engineers not being proactive on this? We must change our standards to address inflow & infiltration, exfiltration, corrosion, H2S gasses, and safety. We are still putting temporary, oversized, dangerous infrastructure in the ground that is guaranteed to fail.

M. Susan Hardwick, CEO of American Water

"Another report card, and no change or improvement in the last four years. America's drinking water and wastewater infrastructure is stagnant".

CARBON MITIGATION

“ A CONCRETE MANHOLE HAS AN ANNUAL CARBON FOOTPRINT THAT IS NEARLY **175x** THAT OF A PLASTIC MANHOLE ”

Comparative Life-Cycle Assessment of Greenhouse Gas Emissions for Plastic and Concrete Manholes

Source: Kumar Venkat
CleanMetrics Corp. Washington



JIC 2026 for Registered Attendees Only
Unauthorized Reproduction or Distribution Prohibited





Thank You!

Open for Q & A

▶ Jason Shriver

▶ Channel Sales Manager

▶ Fort Worth, TX

▶ (806)777-3141

▶ Jason@poopit.com

▶ poopit.com

UIC 2026 for Registered Attendees Only
Unauthorized Reproduction or Distribution Prohibited