

New Era of Utility Mapping Using AI

4M

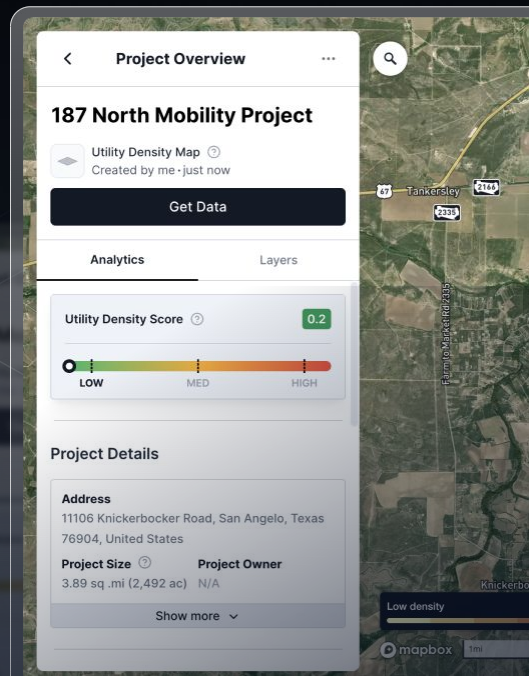
Underground Infrastructure Conference 2025

03/06/2025 | Houston, TX



Raz Ezra

Senior Director



The Subsurface Today



Water, Sewer and
Transmission lines



Phone & Fiber Optic Cables,
Electrical Gas distribution



Subway Lines & Underground
static infrastructure

A worker in a high-visibility yellow vest with 'BLOOD HOUND, INC. BHUG.COM' and a hard hat is using a handheld device on a grassy field. In the background, there are trees, a white pickup truck, and a modern building with large windows.

The industry today, is trucks, boots and locating device



Highly Expensive
Many layers of risk mitigation



Manually Intensive
Imperfect and overmatched



Not Up-to-date
Only a snapshot in time

No Single Source of Utility Data



**Record Research Is
Time-Consuming**



**Poor Data Leads To Poor
Planning, Design & Budgeting**



**Uncertainty Puts Your
Project Execution At Risk**

94%

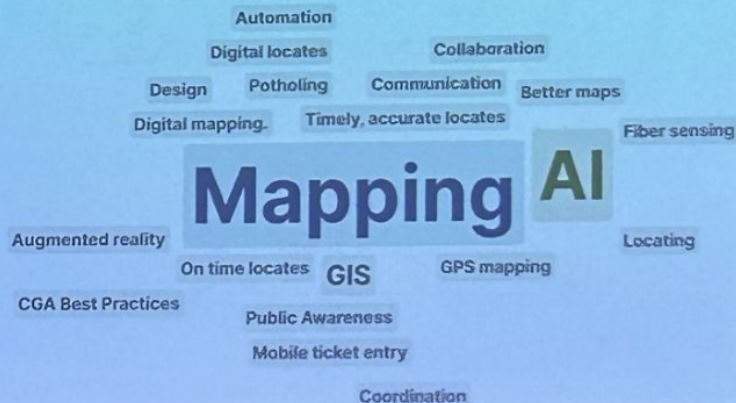
Of Utility Locating Damage root causes were caused by incomplete or inaccurate subsurface infrastructure data

*2022 DIRT Report - Common Ground Alliance

CGA Conference & Expo

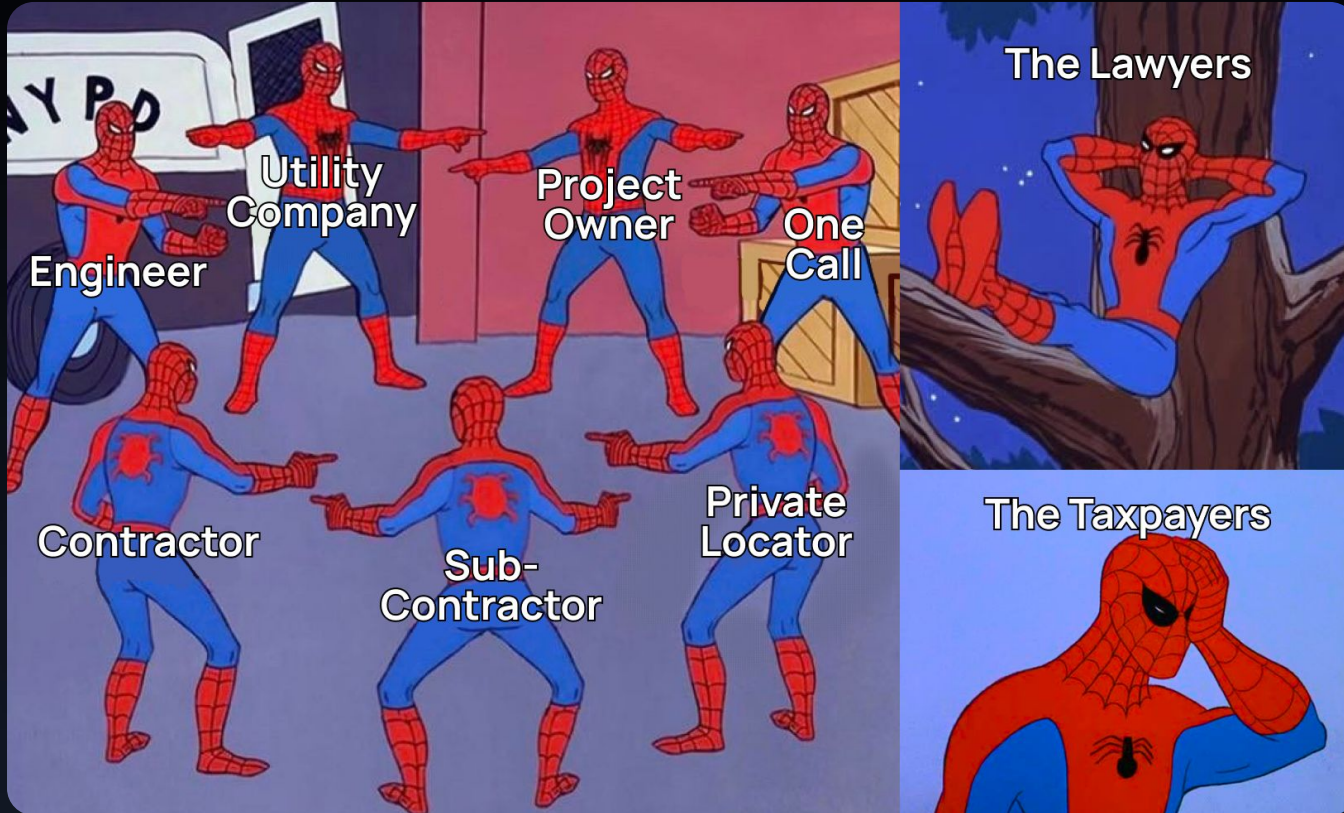
April 2024 | Colorado

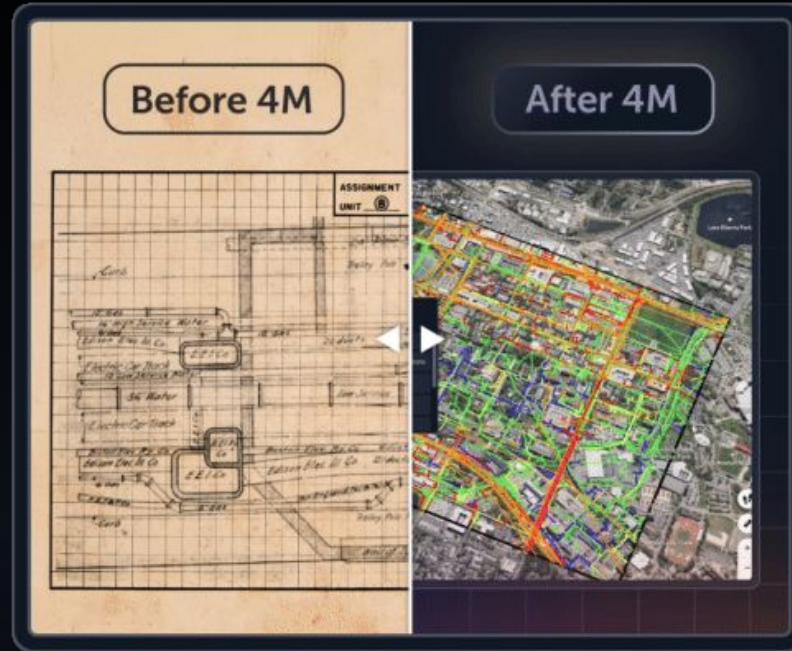
What practice or technology do you think has the most potential to reduce damages to underground facilities?



Rising to the challenge of Damage prevention

But Eventually, Who's Responsible ???





"We can't build projects in the 21st century like we did in the 20th century; it's a different world that's out there."

- **Shailen Bhatt**, Federal Highway Administrator

Here's what I know is true

Digital transformation isn't a matter of if, but when.



The First Utility AI Platform

Delivering **Reliable Data At The Lowest Cost Point** In The Project Lifecycle

- **Established:** 2019
- **Employees:** 125
- **HQ:** Austin, TX
- **Funding:** Total of \$75M Series A(+)
- **Utility miles mapped throughout the US:** 19.5B ft.
- **GTM strategy:**
 - Google Maps of the Subsurface
 - Infrastructure-Engineering firms, DOTs & Utilities


WOOLPERT

 Stantec

 LAN

 FDOT

 HNTB

 FREESE
NICHOLS

 HDR

 GDOT
Georgia Department of Transportation

 olsson®

 Westwood

 Texas
Department
of Transportation

 wsb

 MasTec

 Kimley»Horn

 CDOT

 T2 utility
engineers

 BURNS & McDONNELL

 HALFF

 Kiewit

 LANGAN

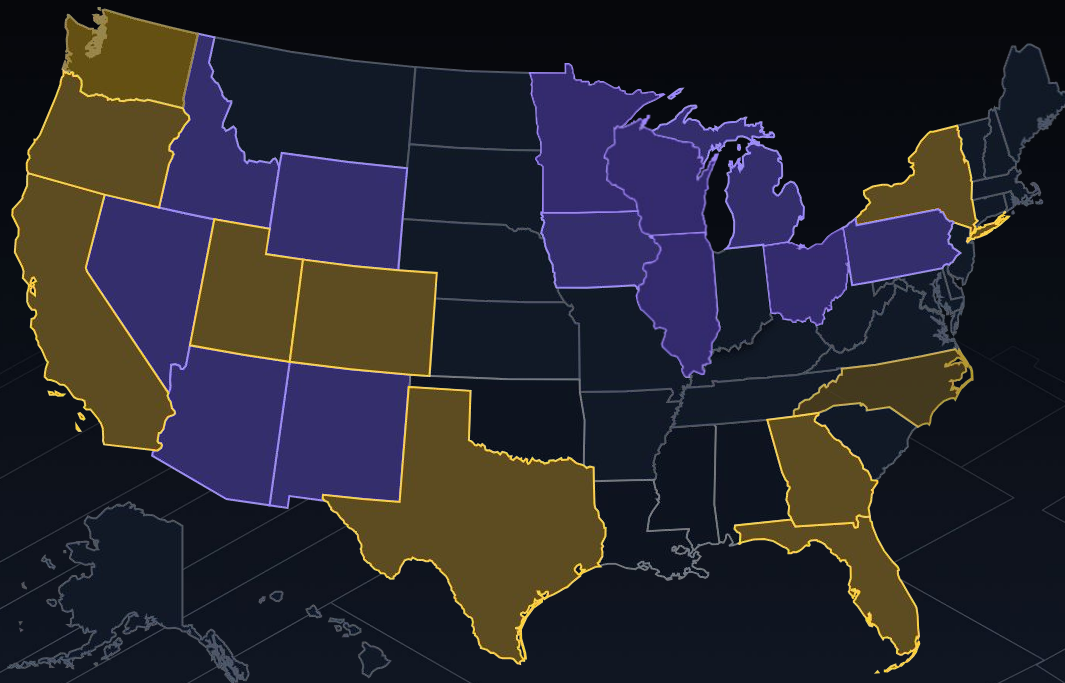
 LJA
Engineering, Inc.

 QUALUS
POWER SERVICES

4M Foundation Data: State Expansion

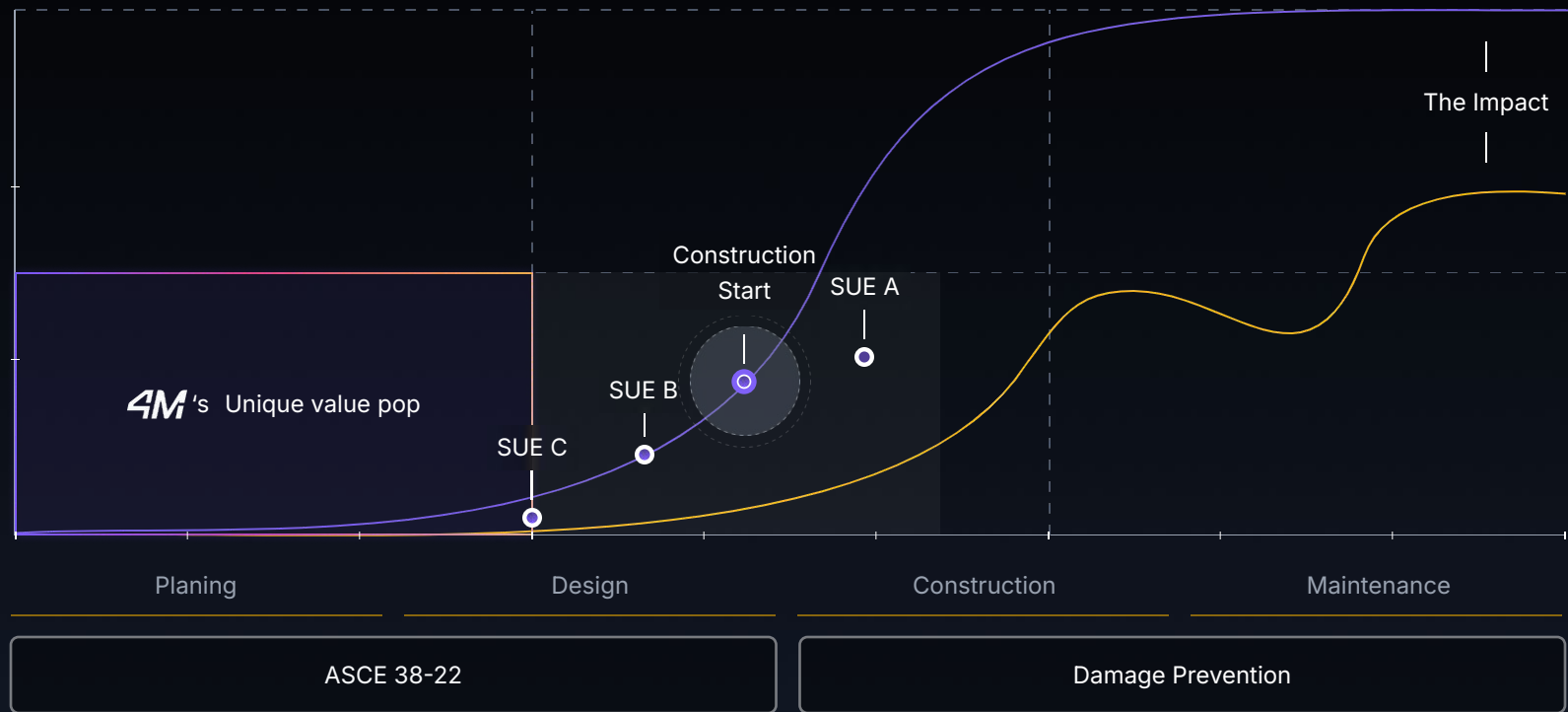
Total of 22 mapped states with
Foundation Data by 2025

- Available Foundation States
- Upcoming Foundation States
- Mapping Provided On-Demand



The **Gold Window** for Risk Mitigation Using **AI** for Utility Mapping

Planned
Actual



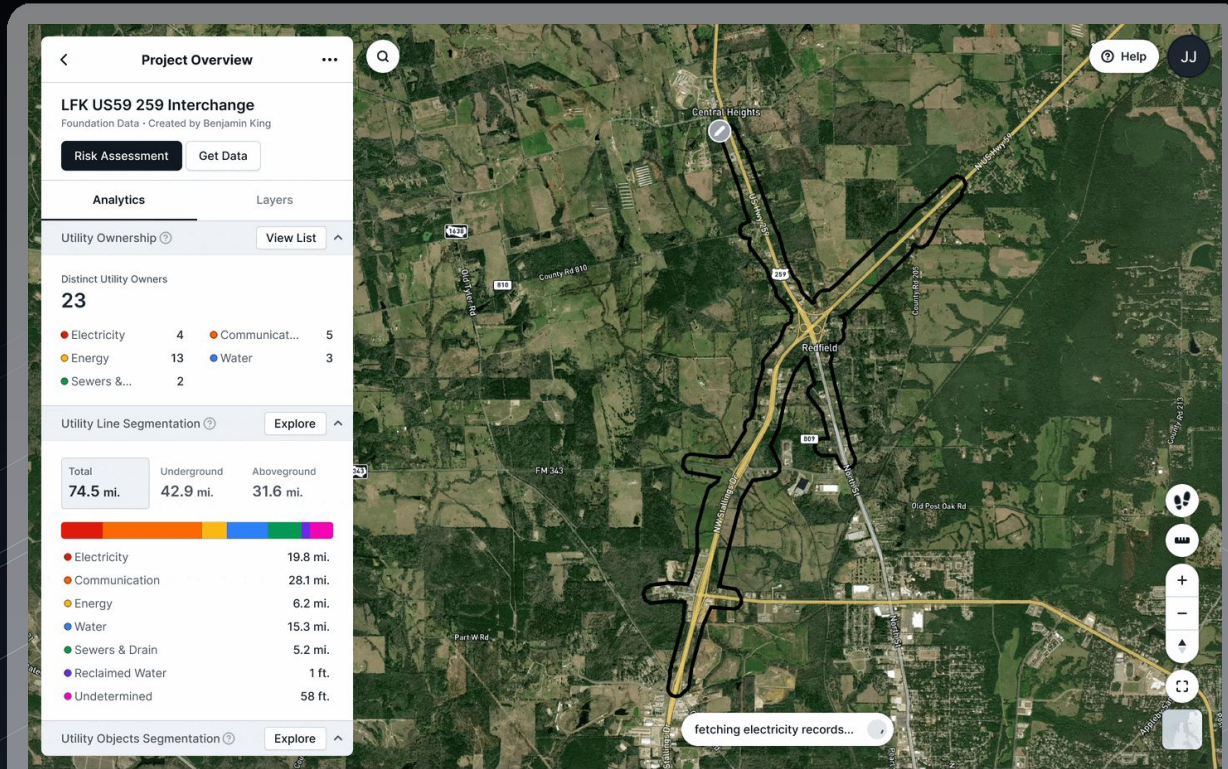
AI Conflation Engine

4M



[↔ Link To Product](#)

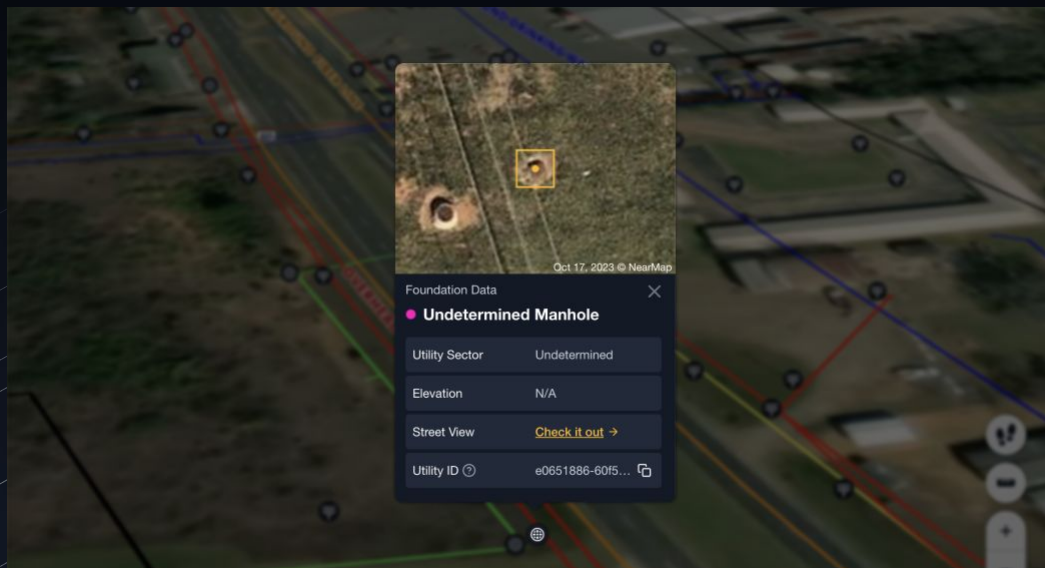
The Map Product



Early Planning & QA/QC

4M

Mobilize field teams faster and ensure no utility goes unnoticed with instant, reliable utility data—enabling confident QA/QC investigations and keeping projects on schedule.



I use 4M for upfront proposals and QA/QC—obtaining quantities, utility parcel owners, schedule estimates, feasibility route studies, right-of-entries, easements, and parcel acquisition. This **upfront information gives us an edge and lays a solid foundation for our projects.**



Ryan Lewis, PE

Vice President, Director of
SUE/Utility Coordination at
Half

Power Undergrounding Success Story

The Challenge: Slow, Costly Utility Data Collection

MasTec's FPL Overhead-to-Underground conversion projects faced 9-month permitting delays and high labor costs for utility data collection, slowing schedules and tying up resources.

The Impact: Shortened timelines and significant cost savings

⚡ 77% Faster Permitting

- 100+ of projects delivered in the first 2 months (vs. 9 months traditionally)
- Enabled 2025 projects to start in 2024, gaining a 7-month advantage

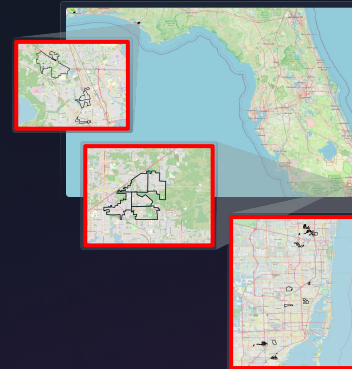
💰 \$887K in Labor Savings

- 25-30% reduction in labor costs
- Freed 25+ employees for higher-value projects

📈 \$94K in Financial Gains

- Lower interest payments on construction loans
- Faster client payments through earlier project milestones

Total ROI with 4M: 2.42x ROI



**Accelerated Design
time by 3 months**

**Accelerated record
research by 7 months**



Kevin Hotchkiss, Director of Design & Outreach:

"Getting projects done quicker and ready for construction sooner pays for 4M on its own... **We've never been this far along on a project before.**"



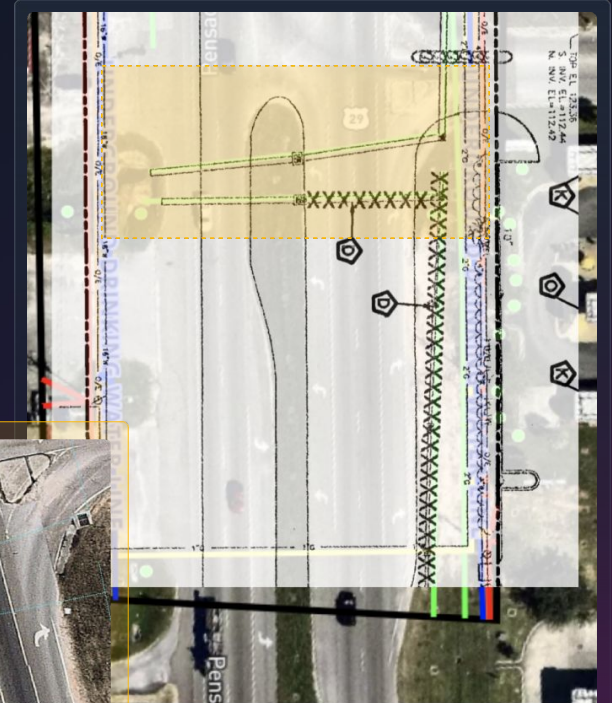
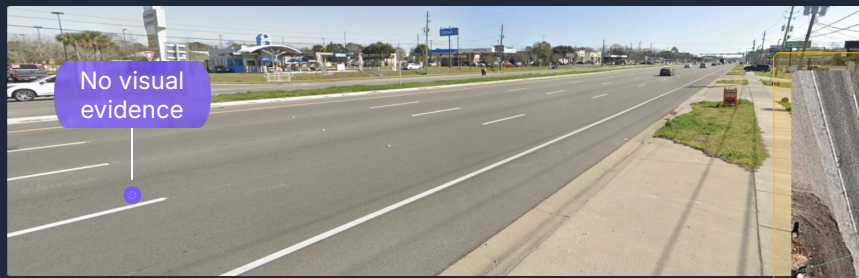
Michael Acosta, VP:

"Last year, utility data collection took 9 months. With 4M, we did it in 2 months—accelerating design, reducing constructability issues, and **shortening completion timelines by 2-3 months.**"

Avoid Utility Strikes By Looking Into the Past

MasTec Tests 4M in a Known Strike Zone

4M's technology successfully identified a previously unlocatable utility line—one that had been struck during past construction. Using historical imagery and digitized utility records, 4M pinpointed the exact location of the line, showcasing its ability to mitigate risk and prevent future utility strikes.



Mapping smarter routes with utility intelligence

2025 product roadmap



Get **Early Access** to Utility Intelligence

4M

- Get access before others and stay competitive.
- Have a voice on development.
- Transform your 2025 project workflows.



4MAnalytics.com

Scan to
Register