

Assessment of a Glass-Lined Digested Sludge Force Main

Kristopher Embry, PICA Corp.



Underground Infrastructure Conference

Construction. Rehabilitation. Asset Management.

March 19-21, 2024 | Oklahoma City, OK



Assessment of a Glass-Lined Digested Sludge Force Main

Agenda

- * Typical challenges with inspecting force mains
- * Remote Field Testing Electromagnetic Technique (RFT) overview
- * How to inspect a force main
- * Case Study:
 - * 1.67 mile 8-inch FM Inspection for Nashville (TN) MWS



Assessment of a Glass-Lined Digested Sludge Force Main

- * Difficult to Inspect

- * Long, partially surcharged/static head, defects not visible
- * Often no existing pigging infrastructure

- * How can we inspect a force main and what do we want?

- * In-Line RFT EM
- * Location, size and depth of defects



Underground Infrastructure Conference

Construction. Rehabilitation. Asset Management.

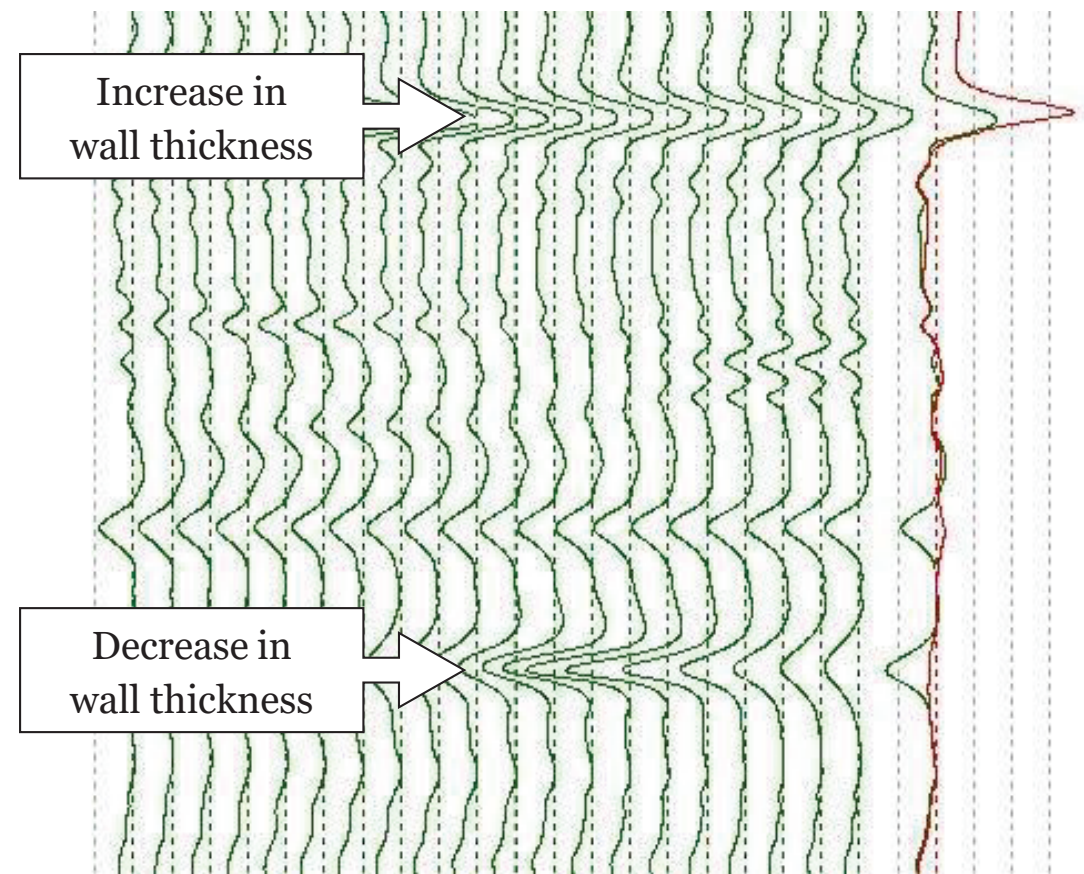
March 19-21, 2024 | Oklahoma City, OK



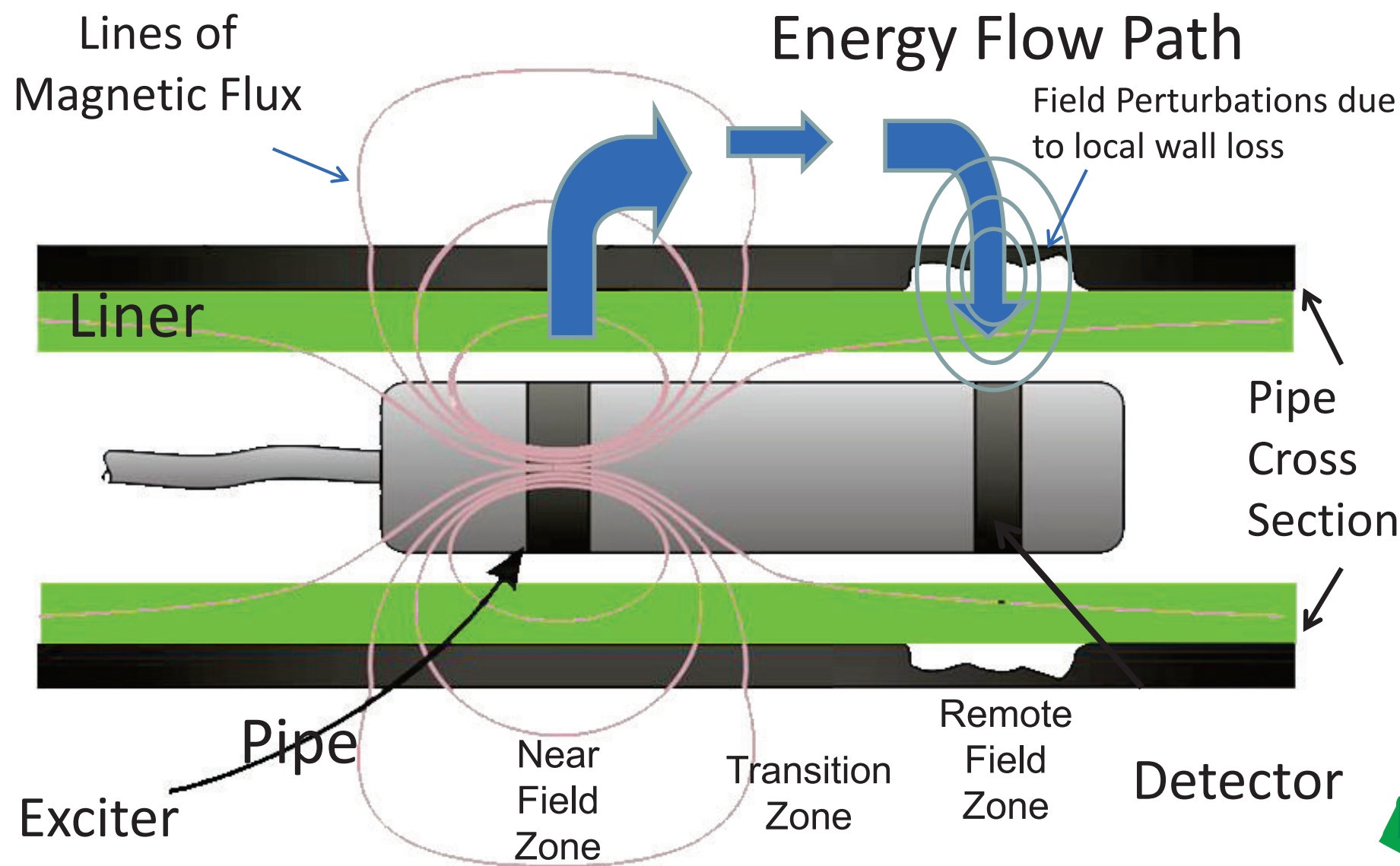
Assessment of a Glass-Lined Digested Sludge Force Main



Versus



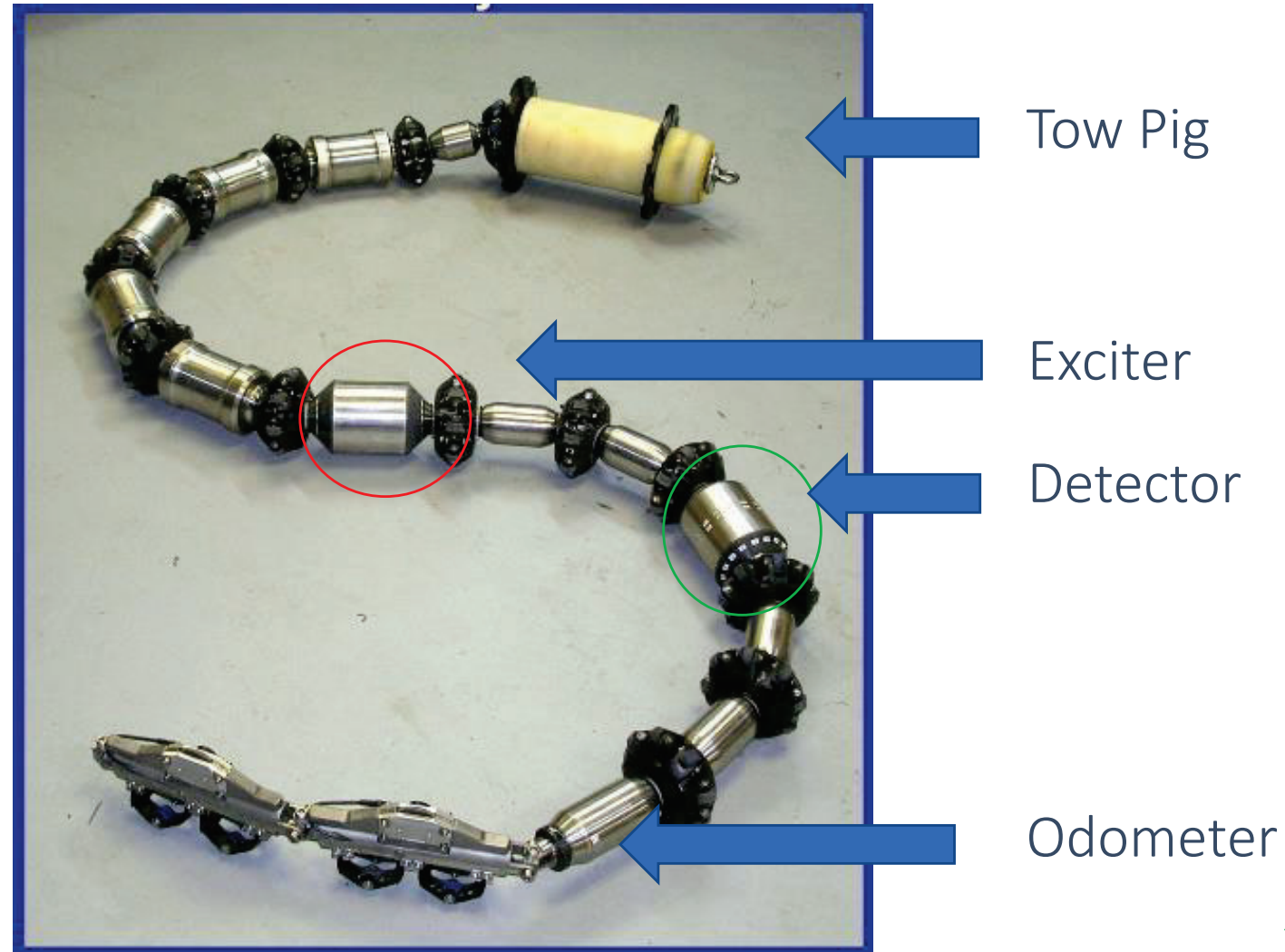
Assessment of a Glass-Lined Digested Sludge Force Main



Assessment of a Glass-Lined Digested Sludge Force Main

Why RFT?

- Validated as accurate
- Repeatable
- Does not require couplant
- Does not require contact
- Full Bore/Cleaning



Underground Infrastructure Conference

Construction. Rehabilitation. Asset Management.

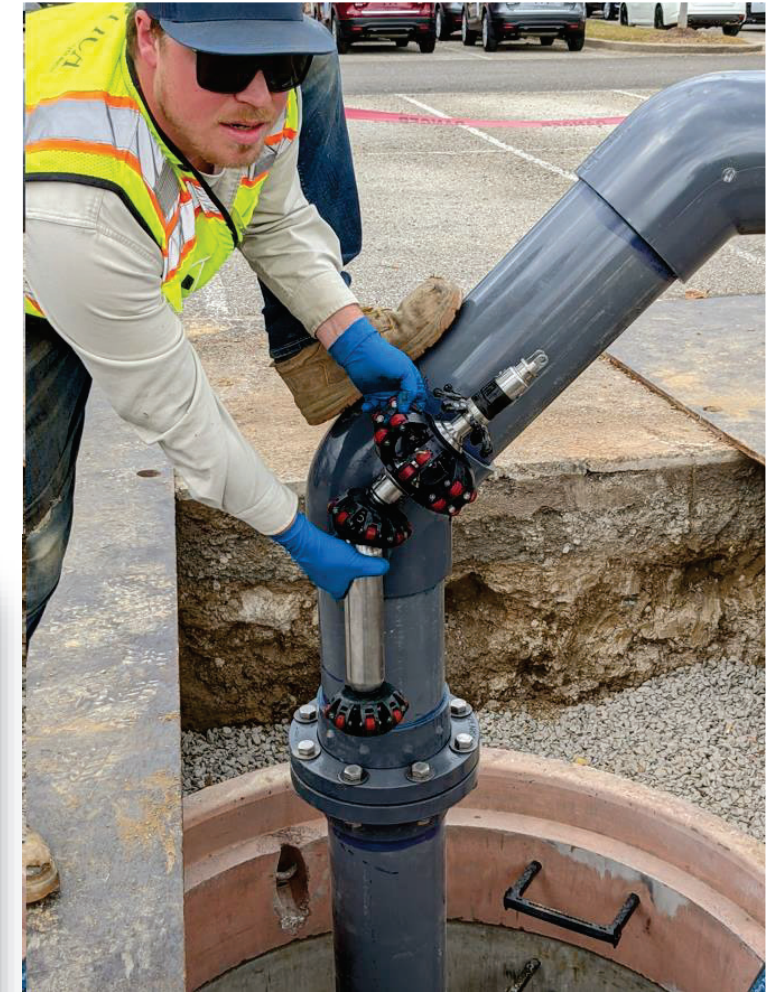
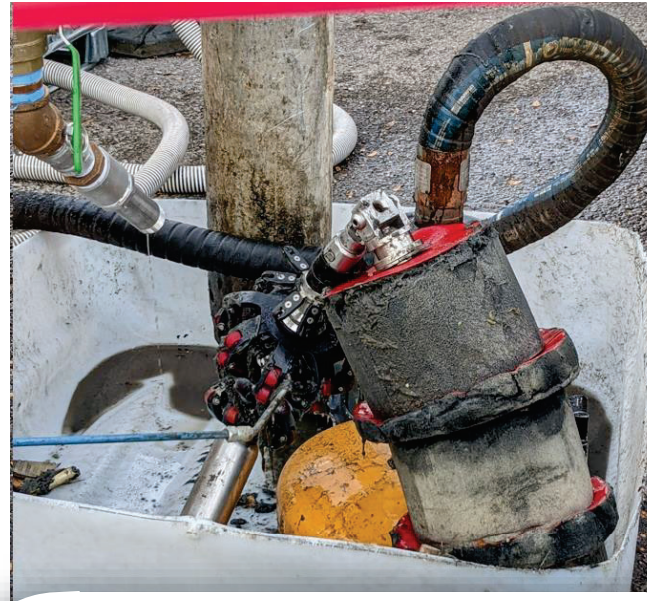
March 19-21, 2024 | Oklahoma City, OK



Assessment of a Glass-Lined Digested Sludge Force Main

How to Inspect:

1. Ensure line is “pigable”
2. Clean with progressive pigging
3. Gauge/Prove bore restrictions
4. Scan with RFT EM Tool
5. Validate/Repair/Replace



Underground Infrastructure Conference

Construction. Rehabilitation. Asset Management.

March 19-21, 2024 | Oklahoma City, OK



Assessment of a Glass-Lined Digested Sludge Force Main

Nashville Metro Water Services

4.7-mile 8" Whites Creek DIP Sludge Force Main Inspection

- November 30 – December 2, 2021
- Nashville, TN
- Inspected 1.6 miles of 4.7 miles (valves)
- The longest section of pipe with minimal valves replacements and the areas with the most breaks was selected. Area of interests included an old landfill (Soccer fields after the golf course) with corrosive soils.



Underground Infrastructure Conference

Construction. Rehabilitation. Asset Management.

March 19-21, 2024 | Oklahoma City, OK



Assessment of a Glass-Lined Digested Sludge Force Main

Overview 8" Whites Creek DIP Sludge Force Main Inspection

- November 30 – December 2, 2021
- Pump: Progressive Cavity Pump
- 8-inch DIP sludge forcemain
- Total Length: 24,777 LF; Inspection Length: 8,845 LF
- Installed in 1973
- Multiple peaks and valleys
- It has never been mechanically cleaned or inspected. Operators flush the line with plant water after each use.
- Launch barrel at Ted Rose Golf Course & receive barrel in manhole at Downtown Nissan parking lot.



Underground Infrastructure Conference

Construction. Rehabilitation. Asset Management.

March 19-21, 2024 | Oklahoma City, OK



Assessment of a Glass-Lined Digested Sludge Force Main

Overview 8" Whites Creek DIP Sludge Force Main Inspection

- Previous breaks in force main occurred in highly congested areas and golf course.
- MWS addressed clogging issues by using higher pressures and plant water to push the clog through.



Underground Infrastructure Conference

Construction. Rehabilitation. Asset Management.

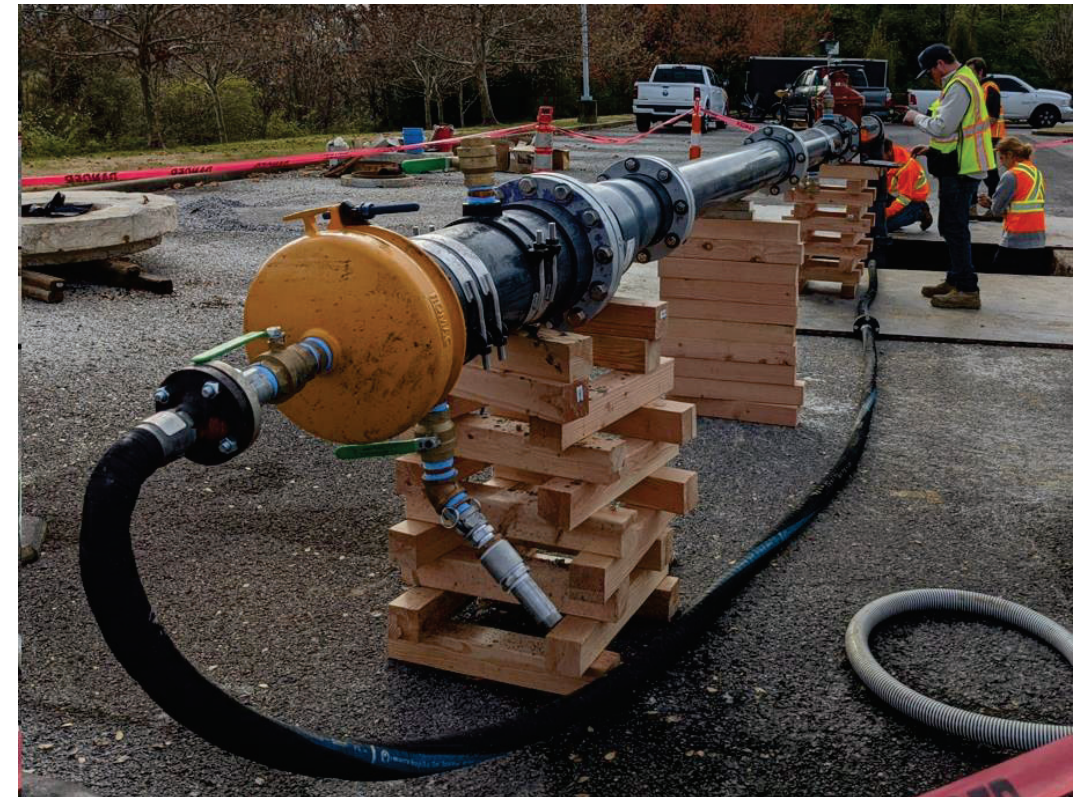
March 19-21, 2024 | Oklahoma City, OK



Assessment of a Glass-Lined Digested Sludge Force Main

Overview 8" Whites Creek DIP Sludge Force Main Inspection

- Launch site was approximately 13,000 LF from the treatment plant.
- 10" launch barrel installed prior to PICA arrival, connecting to the force main through a wye fitting.
- Used plant water, treated plant effluent (non-potable), to propel tool.
- Had to monitor/communicate pressures at both the progressive cavity pump and launcher to ensure there was enough pressure to move the instrument through the launcher and receivers 45-degree bend without blowing the pipe by the plant.
- Low flow rates < 50gpm



Underground Infrastructure Conference

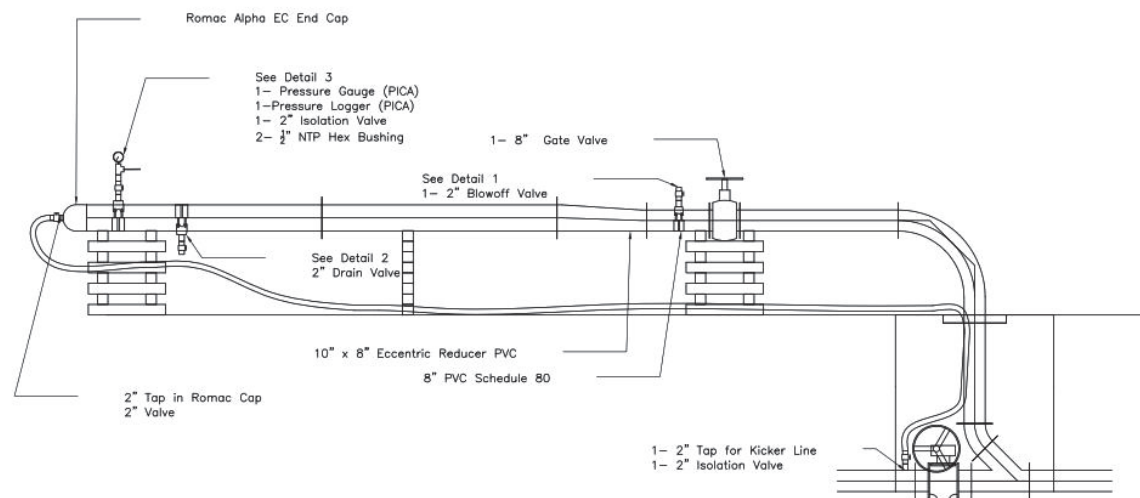
Construction. Rehabilitation. Asset Management.

March 19-21, 2024 | Oklahoma City, OK

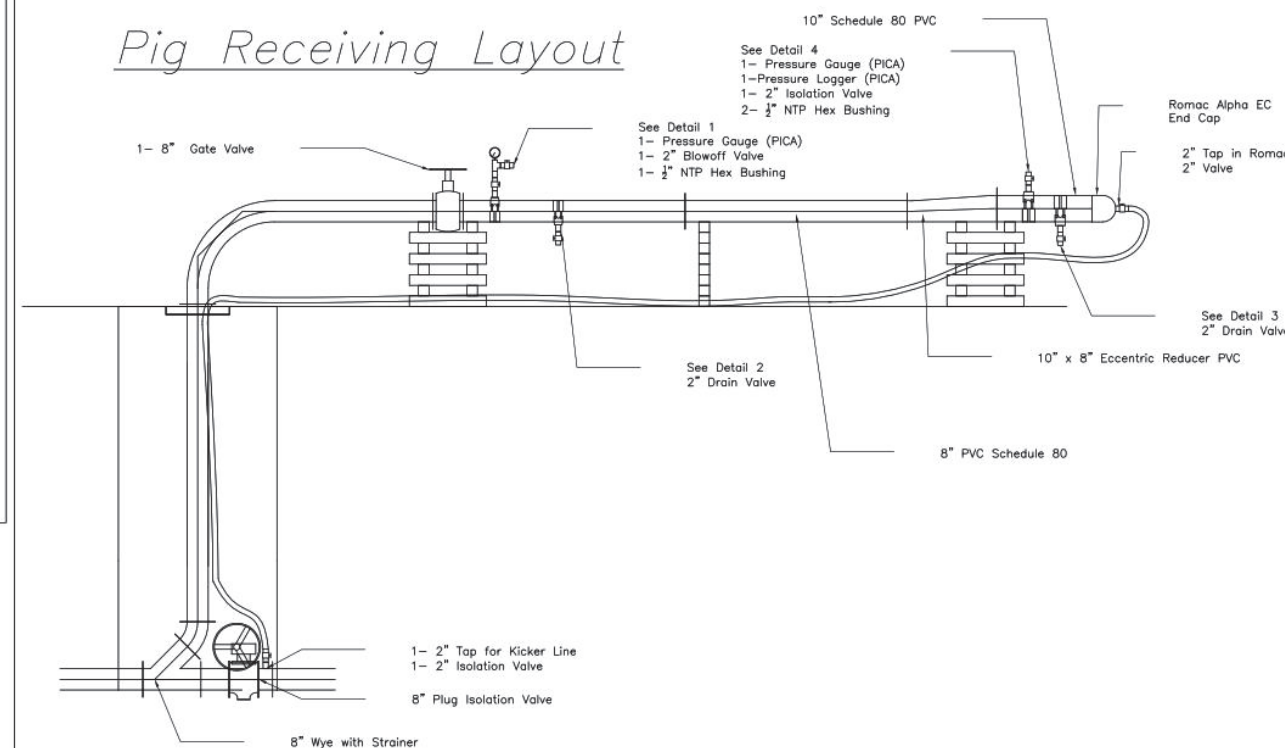


Assessment of a Glass-Lined Digested Sludge Force Main

Pig Launching Layout



Pig Receiving Layout



Underground Infrastructure Conference

Construction. Rehabilitation. Asset Management.

March 19-21, 2024 | Oklahoma City, OK



Assessment of a Glass-Lined Digested Sludge Force Main

Pigging and Proving:

- All pigs were removed in satisfactory condition
- Launched gauge - 4.5 hours
- The gauge plates had minimum bending, indicating no major bore restrictions.
- After the pig and gauge runs
Nashville MWS now has a clean pipe!



Underground Infrastructure Conference

Construction. Rehabilitation. Asset Management.

March 19-21, 2024 | Oklahoma City, OK



Assessment of a Glass-Lined Digested Sludge Force Main

Inspecting:

- Morning launch (less demand)
- Mild winter weather



Underground Infrastructure Conference

Construction. Rehabilitation. Asset Management.

March 19-21, 2024 | Oklahoma City, OK



Assessment of a Glass-Lined Digested Sludge Force Main

Inspecting:

- Used plant water, treated plant effluent (non-potable), to propel tool
- Tracked tool
- PICA noticed the tool initially moved through the pipeline faster than expected
- Adjusted to target inspection speed (approx. 17' per minute)



Underground Infrastructure Conference

Construction. Rehabilitation. Asset Management.

March 19-21, 2024 | Oklahoma City, OK



Assessment of a Glass-Lined Digested Sludge Force Main

Inspecting:

- Tracked tool w/ stakes every 500'
- Tracking through the golf course and along densely populated areas



Underground Infrastructure Conference

Construction. Rehabilitation. Asset Management.

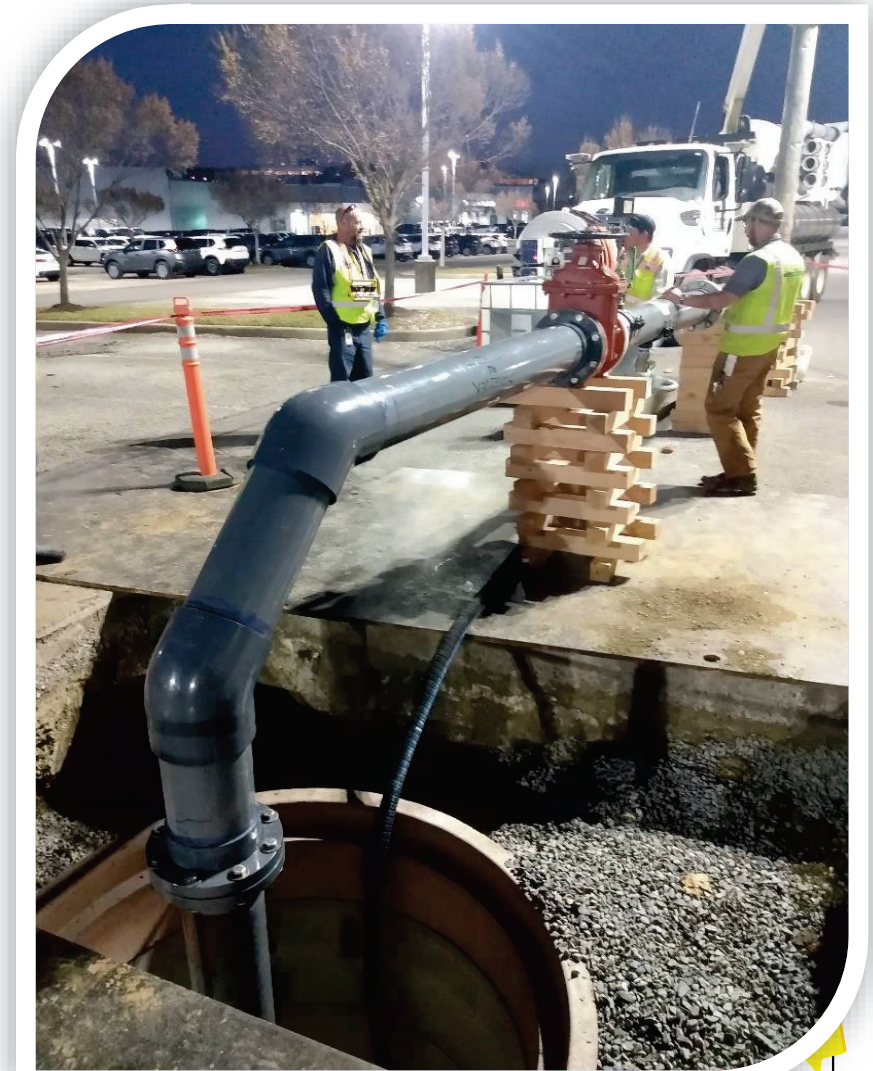
March 19-21, 2024 | Oklahoma City, OK



Assessment of a Glass-Lined Digested Sludge Force Main

Inspecting:

- Tool arrives – 9 hours



Underground Infrastructure Conference

Construction. Rehabilitation. Asset Management.

March 19-21, 2024 | Oklahoma City, OK



Assessment of a Glass-Lined Digested Sludge Force Main

Results:

- 125 pits

Total distance inspected	8,845 feet
# of pipe segments	505
# of pits detected	125



Assessment of a Glass-Lined Digested Sludge Force Main

Results:

Classification	# of pits in each category	% of total pipeline
Shallow ($\geq 60\%$ RW)	61	49%
Medium (41 – 60% RW)	36	29%
Deep (21% - 40% RW)	20	16%
Advanced (< 20 RW)	8*	6%
Total	125	100%

* Three advanced pits reported as possible through holes with 0% RW.



Assessment of a Glass-Lined Digested Sludge Force Main

Results:

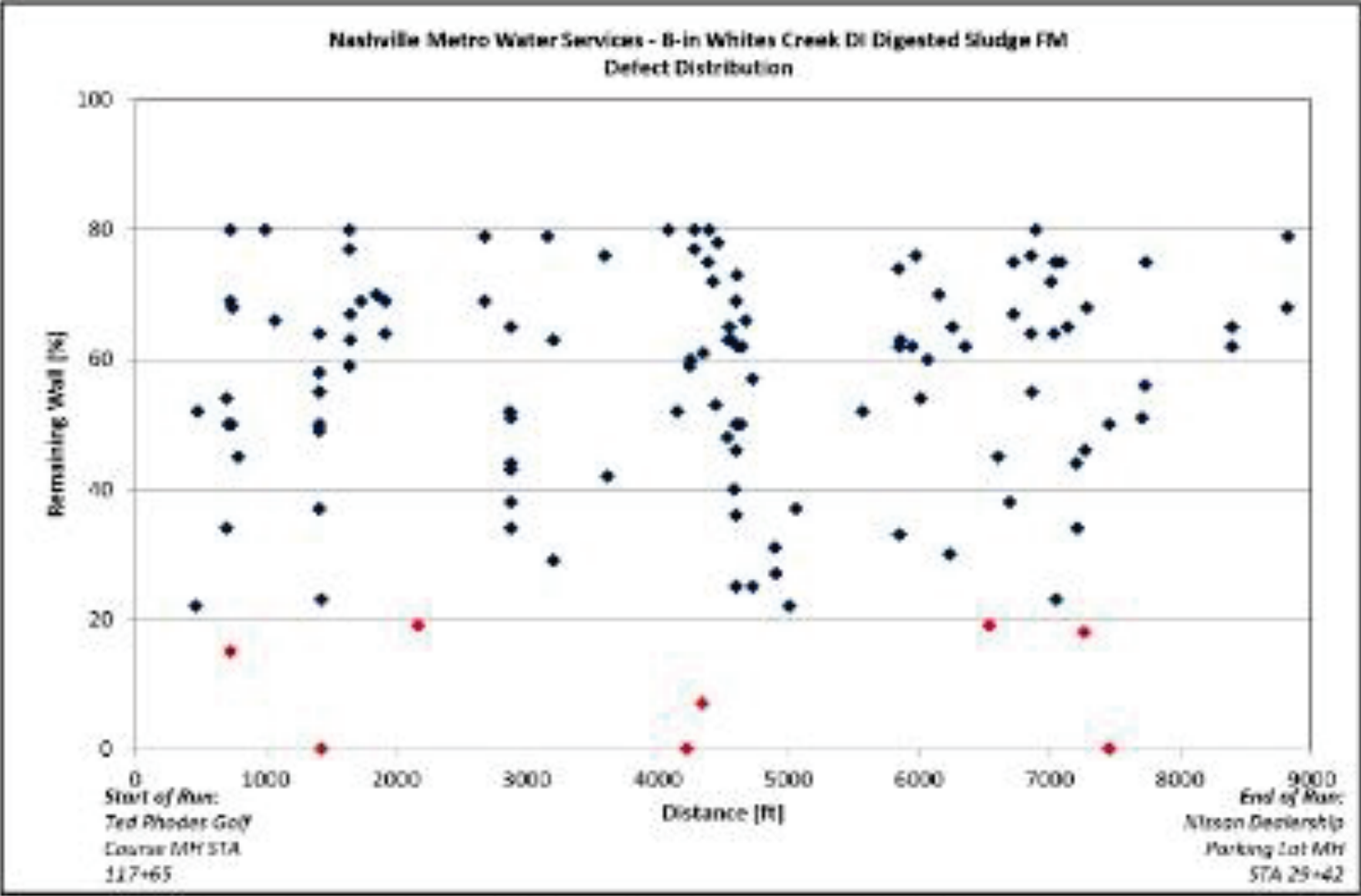


Figure 1. Distribution of localized wall loss with respect to remaining wall for the inspected portion of the 8" Whites Creek DI Digested Sludge Force Main.



Assessment of a Glass-Lined Digested Sludge Force Main

Results:

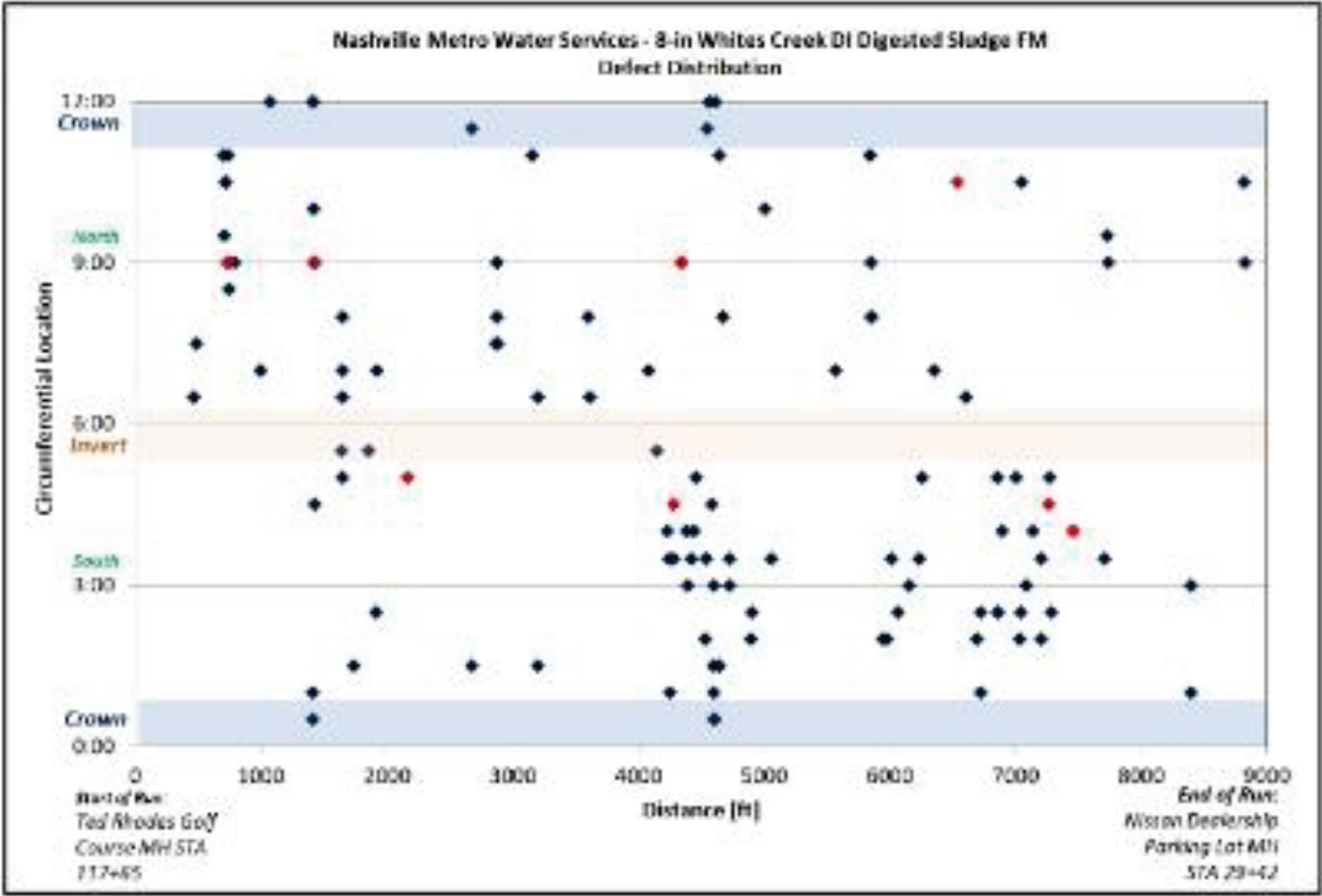


Figure 2. Distribution of localized wall loss with respect to circumferential location for the inspected portion of the 8" Whites Creek DI Digested Sludge Force Main.



Assessment of a Glass-Lined Digested Sludge Force Main

Results:

All corrosion indications were found to be largely isolated, with no individual pipe segments exhibiting heavy concentrations of significant corrosion indications.

Table 4 provides a summary of all pipe segments containing defects measuring $\leq 20\%$ RW.

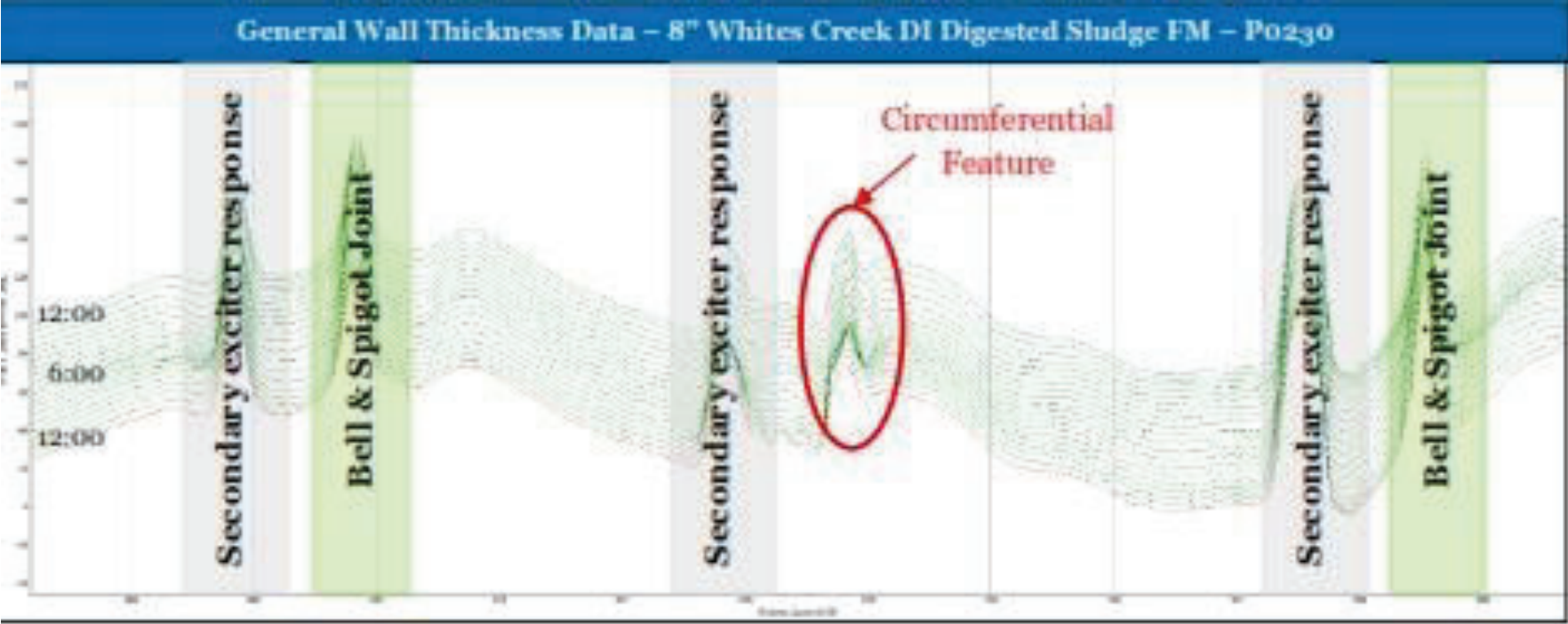
Table 4. Pipe Segments with Defects Measuring $< 20\%$ RW						
Pipe Number	Start Location (ft)	End Location (ft)	Number of Possible Through-Holes	Number of $< 20\%$ RW Defects	Total Number of Defects	Comment
0420	731.48	749.49	0	1	5	
0810	1,421.16	1,439.32	1	1	2	Possible through-hole (0% RW) at 1,433.80 ft.
1220	2,165.40	2,183.63	0	1	1	
2370	4,224.06	4,241.89	1	0	1	Possible through-hole (0% RW) at 4,225.28 ft.
2470	4,342.74	4,361.04	0	1	2	The significant defect measuring 8% RW at 4,345.67 ft may be a construction feature related to the nearby manhole at STA 73+85.
3730	6,540.09	6,558.24	1	0	1	
4140	7,250.84	7,268.97	0	1	2	
4250	7,450.67	7,468.89	1	0	2	Possible through-hole (0% RW) at 7,460.74 ft.



Assessment of a Glass-Lined Digested Sludge Force Main

Results:

RFT strip chart data highlighting a circumferential signal located in P0230, 397.75 ft from the launch barrel. This signal was unique in the RFT data and did not correlate with any pipeline features in the provided drawing records. PICA suspects the signal is the result of a previous pipeline repair, or undocumented pipeline feature.



Underground Infrastructure Conference

Construction. Rehabilitation. Asset Management.

March 19-21, 2024 | Oklahoma City, OK



Assessment of a Glass-Lined Digested Sludge Force Main

Next Steps:

Short Term:

- Targeted replacement of section of pipe with a wall thickness less than 20%, and possibly expand to 40%

Longer term:

- Force Main Replacement/Relocation with a redundant main.



Underground Infrastructure Conference

Construction. Rehabilitation. Asset Management.

March 19-21, 2024 | Oklahoma City, OK



Assessment of a Glass-Lined Digested Sludge Force Main

Thank you! Questions?

Kris Embry, VP of Client Services

PICA Corp.

412-999-4783

kembry@picacorp.com



Underground Infrastructure Conference

Construction. Rehabilitation. Asset Management.

March 19-21, 2024 | Oklahoma City, OK

