



MH CIPP Liner/ CIPP Liner Coating Defects

Rick Gage

Sales Director, Municipal Channel
Waterline Renewal Technologies



NASSCO
NATIONAL ASSOCIATION OF
SEWER SERVICE COMPANIES

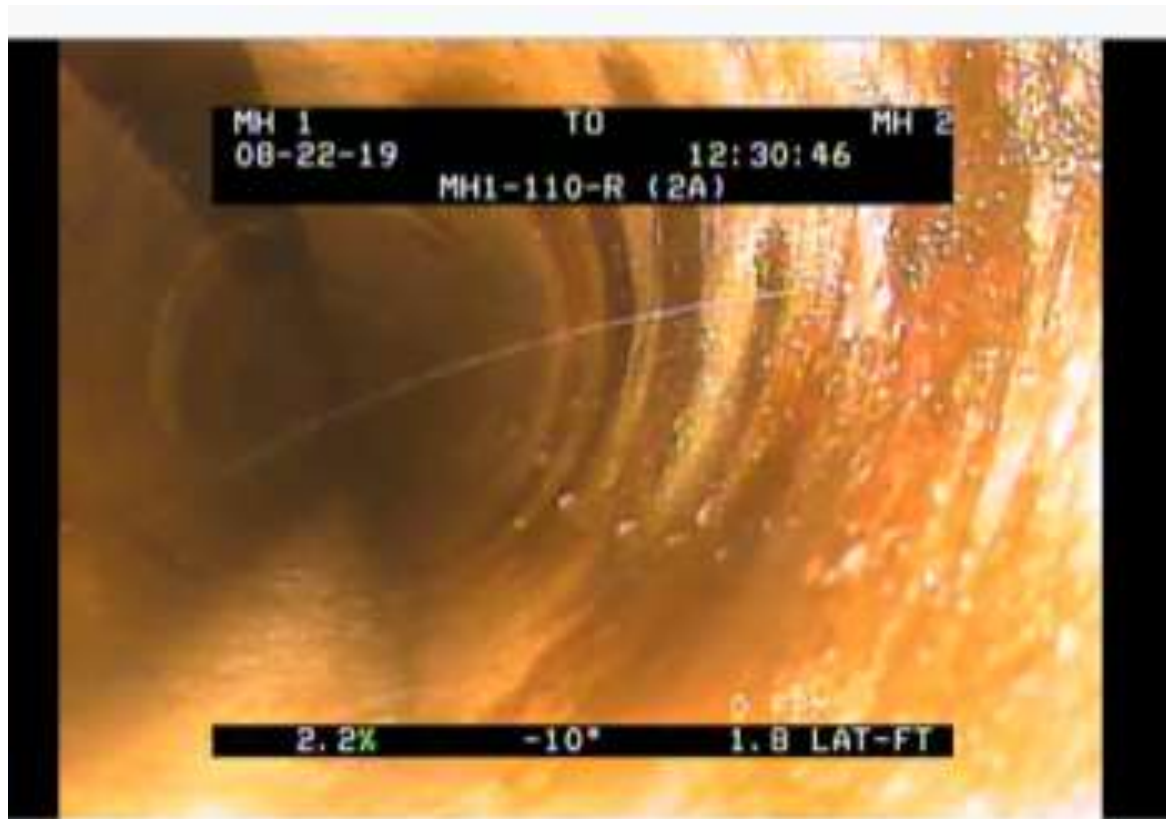


Types of Defects

- Pinhole Leaks
- Staining
- Delamination

Pinhole Leaks

- Pinholes formed in the manufacturing process when the coating is applied



Pinhole Leakage Repair

- Stop the leak
 - mastic or grout
- Prep area
- Apply oversized patch



Staining

- Appearance that liner is leaking



Staining Repair

- Visual Inspection
 - May not require action
- If leaking, again stop leak and patch over.



Staining Repair

- Visual Inspection
 - May not require action
- If leaking, again stop leak and patch over.



Staining Repair

- Visual Inspection
 - May not require action
- If leaking, again stop leak and patch over.



Delamination

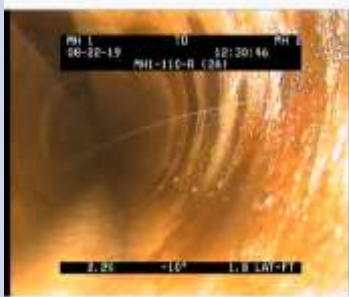
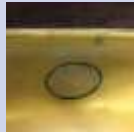


- Coating of liner is peeling away from liner



Delamination Repair

- Remove all coating that is failing
 - If it doesn't leak
 - Option 1 leave as is
 - Option 2 install oversized patch



Coating Defects	Image	Corrective Action
Pinhole Leaks – Coatings on liners can be somewhat porous creating tiny pinholes in a particular area.		Stop the leak with a mastic or grout. Clean around the area that is leaking and depending on the coating PVC or TPU, adhere an oversized patch. 
Staining- Appearance that the liner is leaking by the surrounding containments in the ground.		Inspection should be done by man-entry to ensure the leakage is not occurring. Most times due to the liners being somewhat translucent the liner can take the appearance of what is behind it.
Delamination – Coating on CIPP liner starts to peel away from the liner. This can be related to overheating of the liner during steam cure applications or high exotherm from the resin.		Depends upon the extent of the adhesion failure. Removal of the coating may be sufficient if inspection afterwards shows no leakage. Adhering a patch to the defective area might be required if necessary.

QUESTIONS ??????????

Rick Gage

Sales Director, Municipal Channel
Waterline Renewal Technologies

