



24" FORCE MAIN BY HDD FOR DALLAS WATER UTILITIES

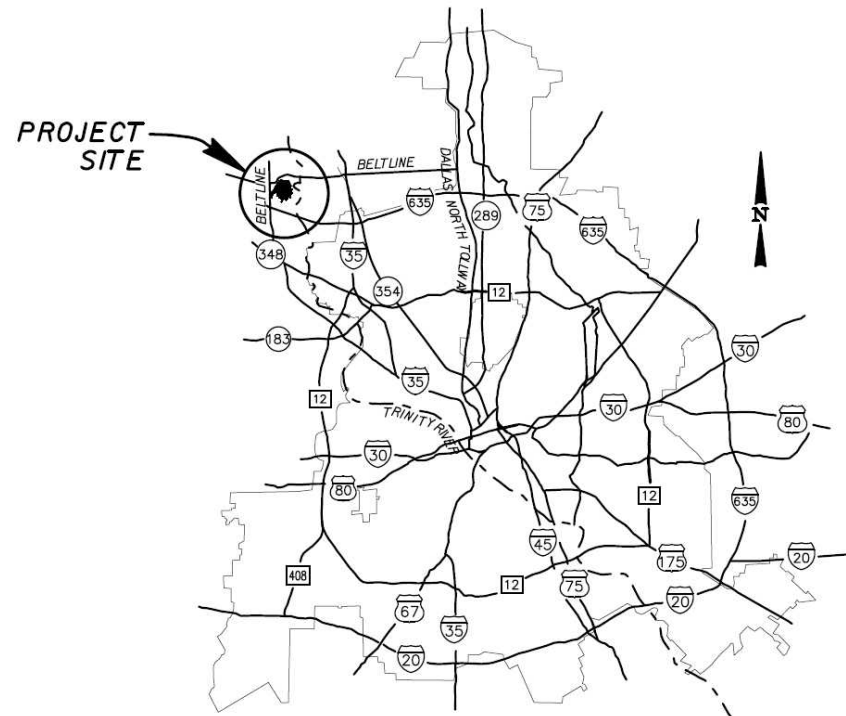
Presented By:
James Bryan, P.E.
Trag Bailey

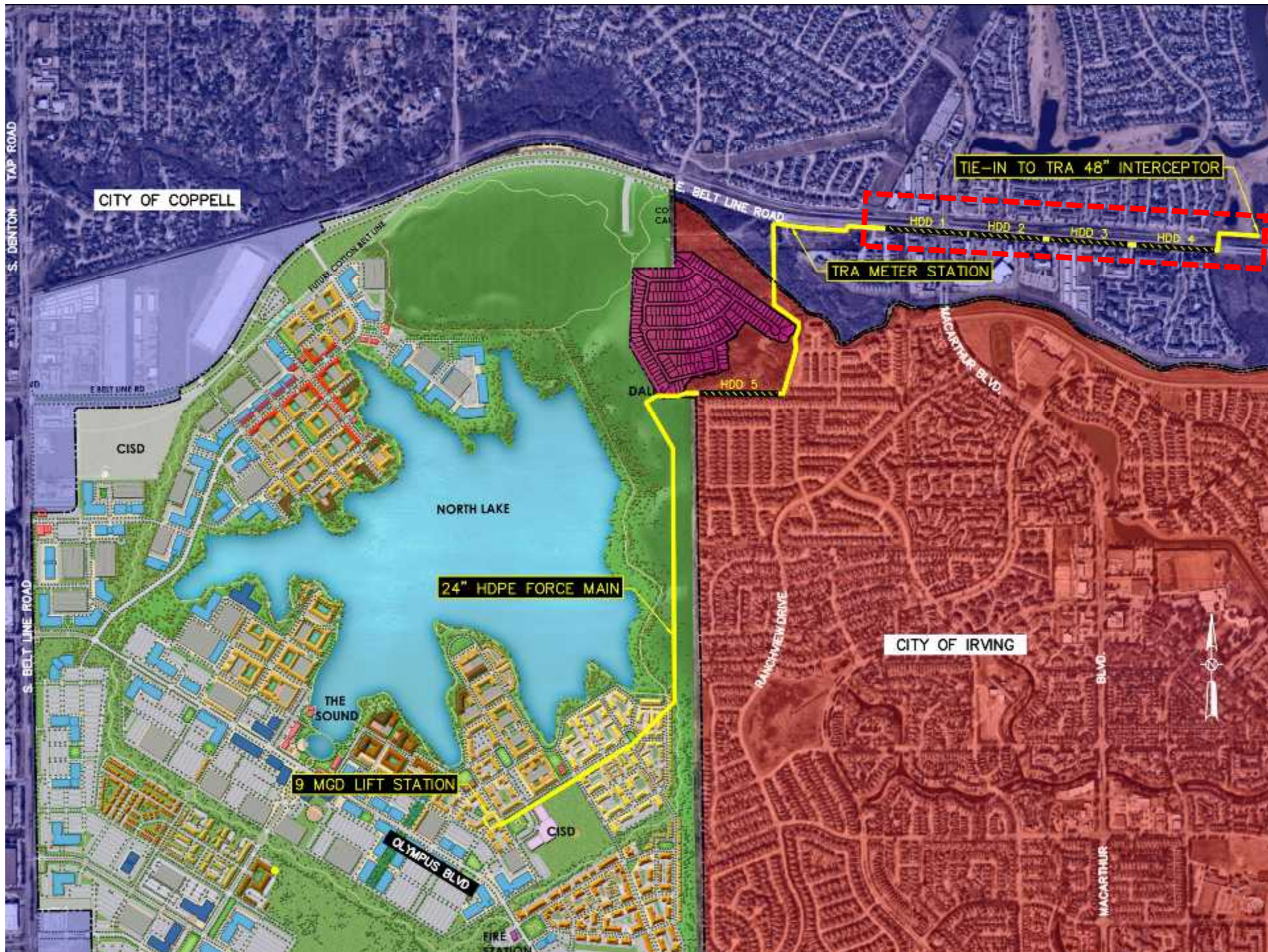


Agenda

- Project Overview
- Why HDD?
- Traffic Control
- Construction Footprint
- HDD Layout
- Construction Photos
- Summary

- Location
- Scope
 - 9 MGD Lift Station
 - 15,000 LF 24" HDPE Force Main
 - 5,000 LF by HDD
- Total Project Cost
 - \$5.5 Million







Why HDD?

- Belt Line Road Corridor
- Adjacent Development
- Railroad
- Traffic
- School
- Existing Utilities
- Visibility





Traffic Control

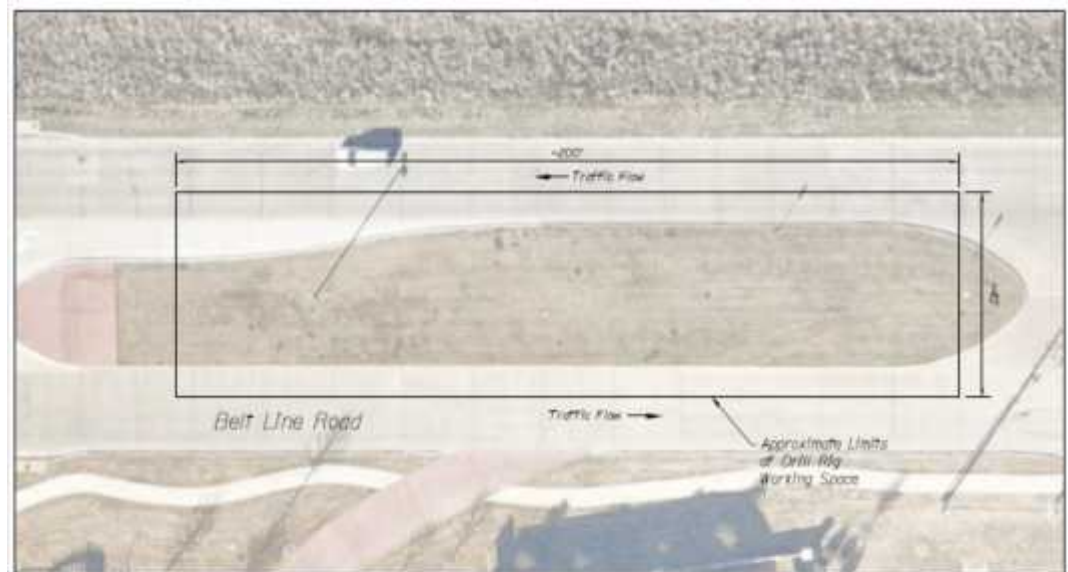
- Belt Line Road Section
 - 4-lane Divided
 - 6-lane Divided
- Maintain minimum two lanes each direction
- Rolling lane closures
- Phased traffic control plans
- Strung pipe out in sections to keep medians open
- CTB protection for drill rig overnight; cones for remaining traffic control





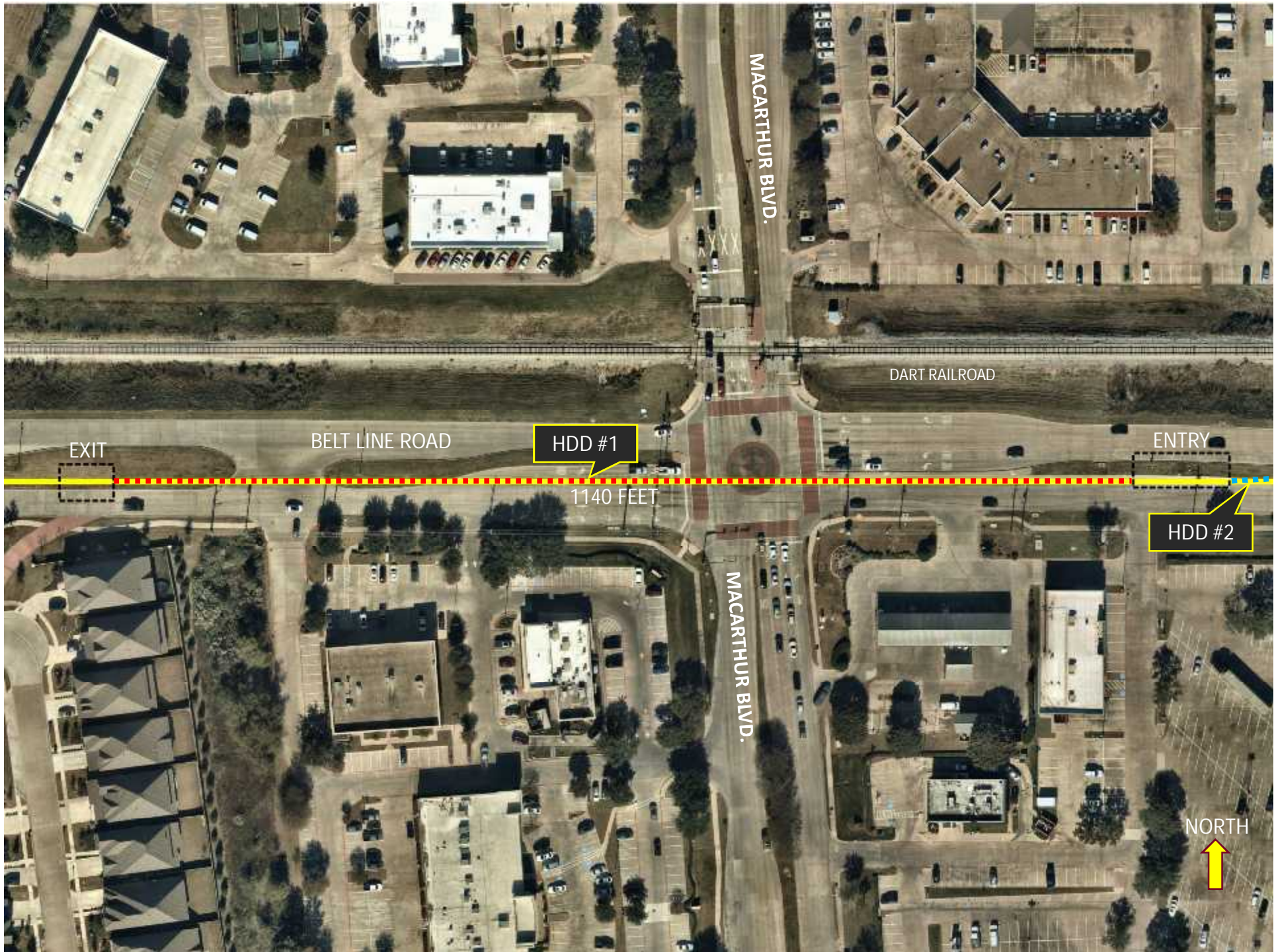
Construction Footprint

- Water Tanker Truck
- Mud Recycling Trailer
- Job/Tool Trailer
- Drilling Rig
- Excavator
- Flatbed Truck
- Work Trucks



2
C-04
TYPICAL WORKING SPACE FOR DRILL RIG SIDE
SCALE: 1" = 30'





MACARTHUR BLVD.

DART RAILROAD

EXIT

BELT LINE ROAD

HDD #1

1140 FEET

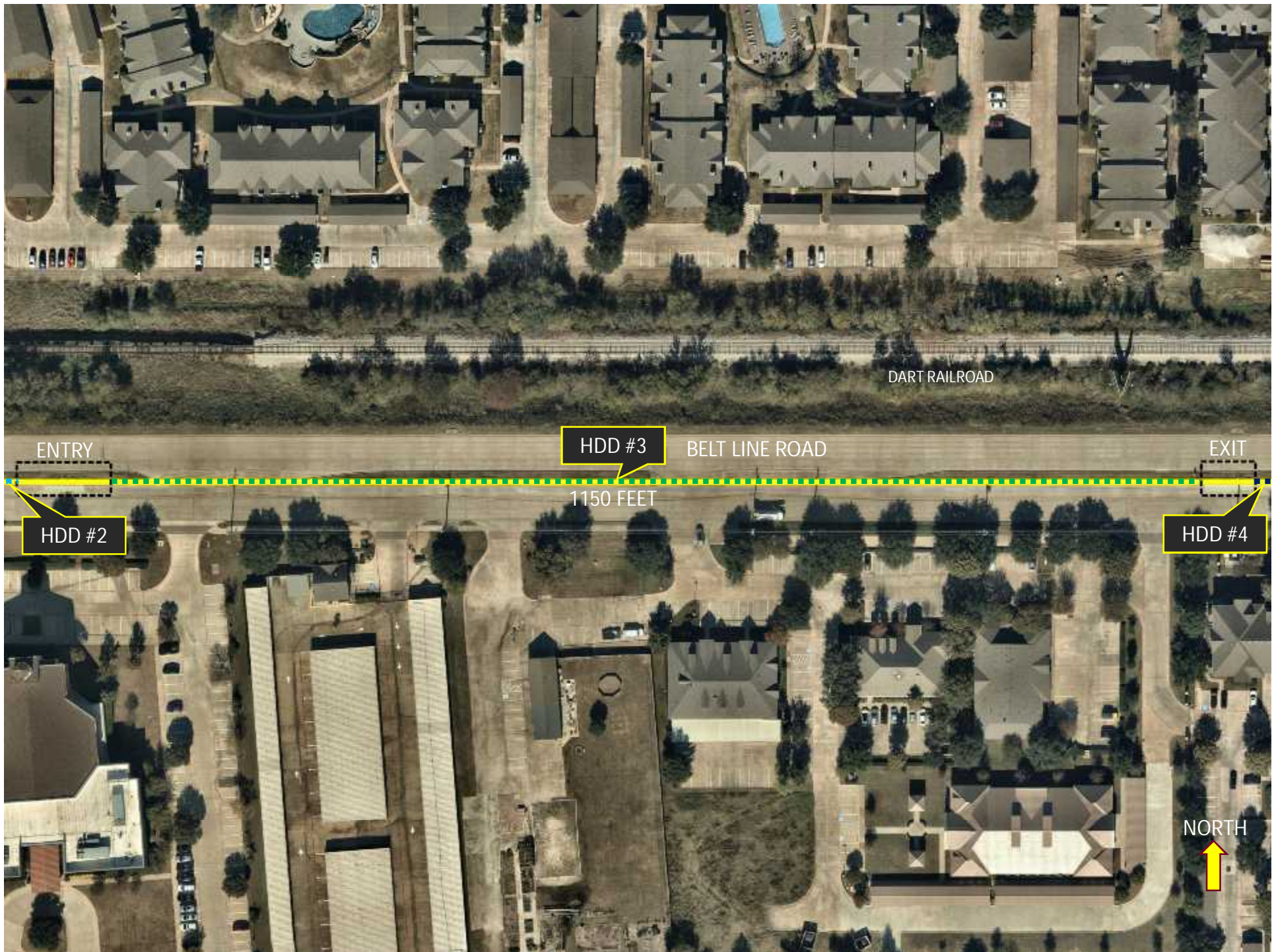
ENTRY

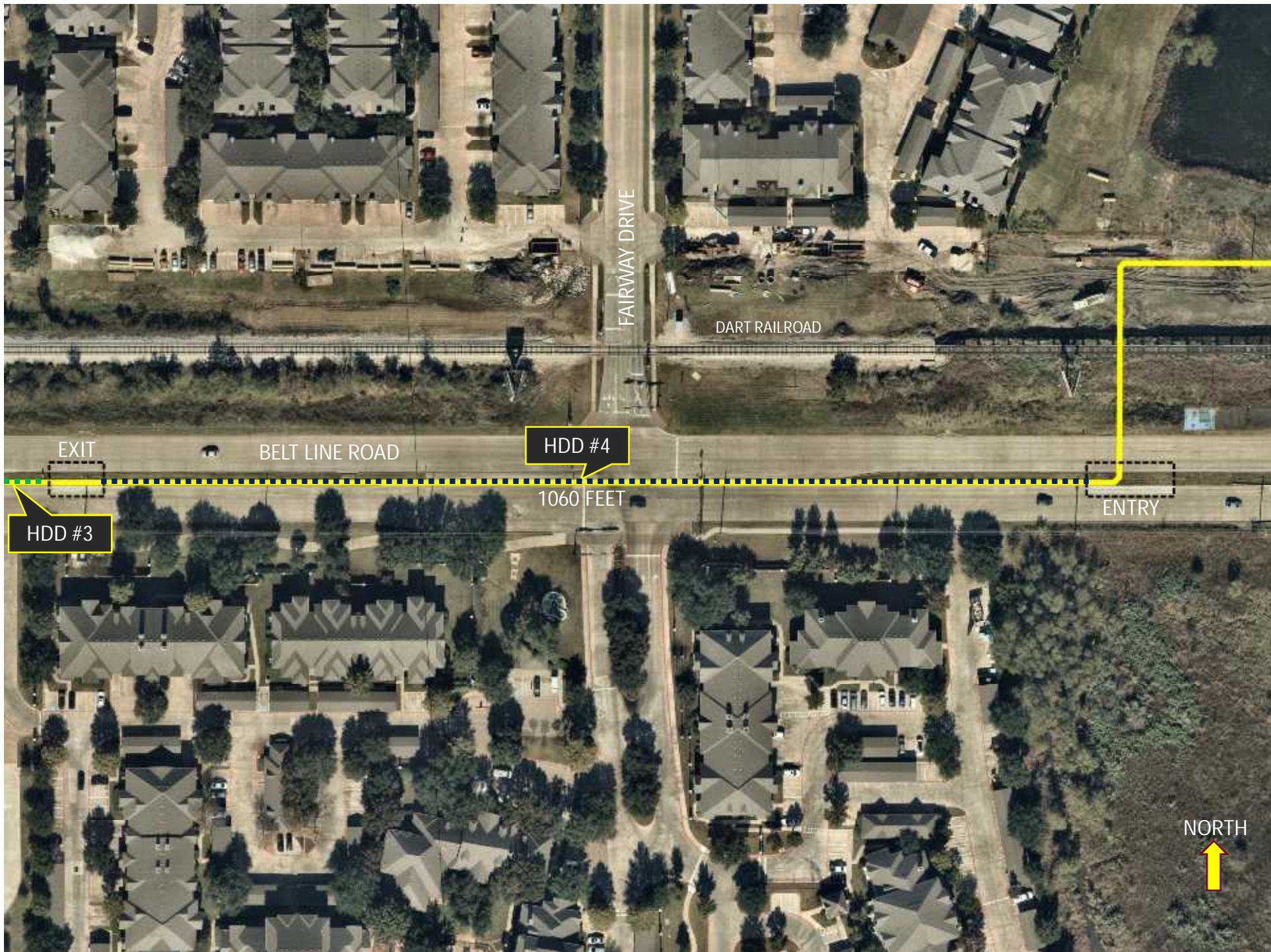
HDD #2

MACARTHUR BLVD.

NORTH







FAIRWAY DRIVE

DART RAILROAD

EXIT

BELT LINE ROAD

HDD #4

1060 FEET

HDD #3

ENTRY

NORTH























Summary

- Schedule
 - 1 month per drill
 - 4 months total in Belt Line Road corridor
- Coordination success
- Minimal disruption and no complaints!
- Lessons Learned
 - Depth variation/ideal radius
 - Utility clearance
 - Drill rig anchoring



THE **UNDERGROUND** UTILITIES EVENT

Underground Construction Technology | Jan. 29-31, 2019 | Fort Worth, TX

Thank You! Any Questions?

James Bryan, P.E.
Kimley-Horn and Associates, Inc.
james.bryan@kimley-horn.com
(972) 776-1752

Trag Bailey
Chisholm Services
trag@chisholmservices.com
(214) 244-2722

