



Safety is the Foundation for HDD Training



Greg Wolfe
Ditch Witch® Director of Training

HDD Training

- Safety is the foundation
- Why is it important?
- What do we have to offer the industry?





Labor shortage

EQUIPMENT WORLD.

EQUIPMENT

Report forecasts shortage of 2 million trade workers in U.S.

 **EQW Staff** | November 29, 2012

Construction Industry Missing Key Tool: Skilled Workers

August 6, 2014 · 4:02 PM ET
Heard on All Things Considered

[A Growing Trend: The Talent Shortage in Construction](#)

Posted on February 12, 2013 by [FMI Corporation](#)

As construction heats up, so does worker shortage



Paul Davidson, USA TODAY 10:53 a.m. EDT August 27, 2015

[Reuters](#) | Wed Sep 9, 2015
Record high U.S. job
openings point to skills
shortage

AGC of America
THE ASSOCIATED GENERAL CONTRACTORS OF AMERICA
Quality People. Quality Projects.



“Labor supply: widespread shortages possible due to retirements, competition from other sectors, fewer vets” (Construction Spending, Labor & Materials Outlook, 2014)

ANALYSIS | Sep 07, 15:22 GMT

Record High Job Openings, but Slower Pace of Gains



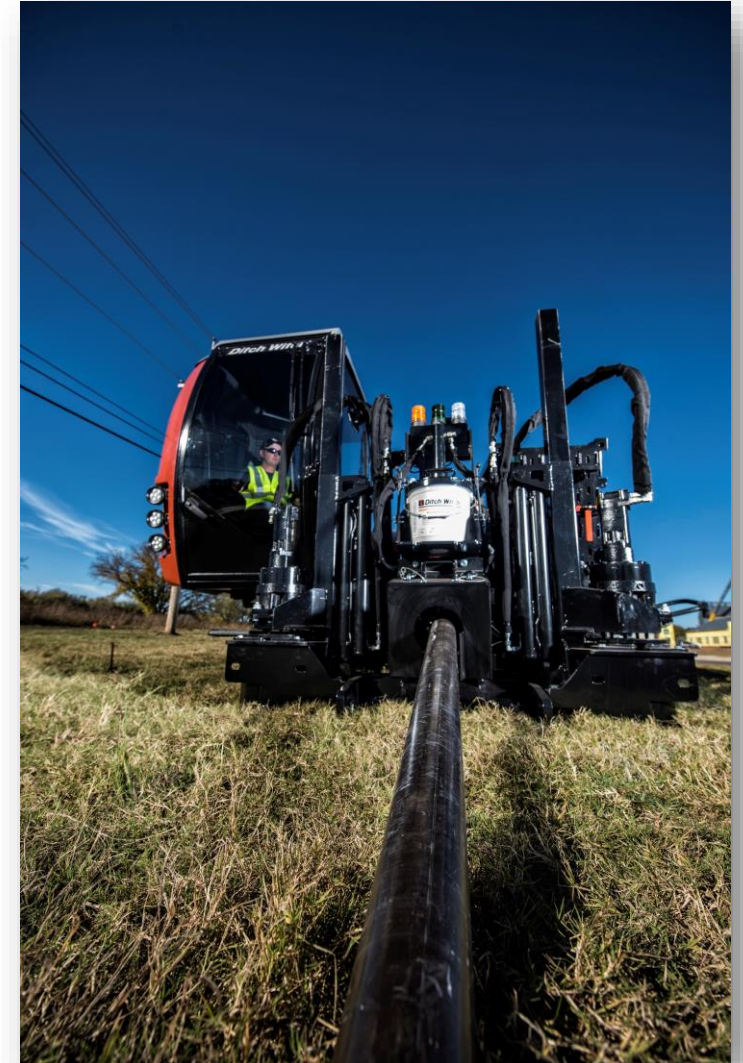
Wells Fargo Research Team
Wells Fargo

“Job openings rose to a record high in July, but the pace of improvement has slowed over the past year. Openings offer further evidence of a tight labor market and growing wage pressures.”




HDD Training Tools



- Online learning
- Simulation
- Training anywhere at anytime
- Most importantly, followed up with Training at the point of purchase in the region of use






HDD Online Courses



[DIRECTIONAL DRILLS](#)[TRENCHLESS](#)[VACUUM EXCAVATORS](#)[TRENCHERS](#)[MINI SKID STEER](#)[TRAINING](#)[PARTS](#)[SUPPORT](#)[MY ACCOUNT](#)[MY DEALER](#)



DITCH WITCH CERTIFIED TRAINING

We Get Crews Ready.

GET TO WORK

We know you need immediate productivity on the jobsite. That's why we developed Ditch Witch Certified HDD Training. All the instruction you need—absolutely free—to get your crew up to speed and on the job safely, efficiently, and in no time at all.

[CONTACT DEALER](#)



knowledge so your crews can be faster, more efficient, more productive and safer on the jobsite. What are you waiting for? Contact your Ditch Dealer now.

[WATCH VIDEO](#)



ONLINE TRAINING

Ditch Witch offers the only online HDD training program which packs decades of HDD knowledge into six easy to understand courses. Topics include: HDD overview, Best Practices, Drill Pipe, Tracking, HDD Tooling and Drilling Fluid. After completing all the courses, you will receive a certificate of completion.

[START NOW](#)



IN THE CLASSROOM

Instructor-led operator training courses cover everything your crew needs to be safe and productive. The comprehensive curriculum utilizes a classroom setting over several days to give your crew the foundation to HDD operation and jobsite management. Your equipment investment pays greater dividends when it is put to skillful use by your best operators.



myDitchWitch



Login or create an account to access interactive resources, like Certified Training, HDD Advisor™, Parts Lookup and Quick Tools, designed to help you determine the right parts and accessories for your Ditch Witch equipment.

LOG IN

[Forgot Password?](#)

LOG IN

NOT A MEMBER? SIGN UP HERE. 



Ditch Witch® | **CERTIFIED TRAINING**

Welcome, Brian
Your username is: B
Edit



HDD ONLINE COURSES

We know you need immediate productivity on the jobsite. That's why we developed Ditch Witch® HDD Online Courses. All the instruction you need – absolutely free – to get your crew up to speed and on the job quickly.

Modules Recent Achievements

Start this course

The modules in this course must be completed in the order listed.

→ Best Practices ⓘ

IN PROGRESS

Operational Overview ⓘ

Drilling Fluids ⓘ

HDD Guidance ⓘ

Drill Pipe ⓘ

HDD Tooling ⓘ



MODULE 1: BEST PRACTICES

Horizontal Directional Drilling

Version 1-ppt



PREPARE - CREW

- Assemble good team
 - Operator and tracker
- Communication method between operator and tracker must be provided
- Have batteries on-hand for communication devices for operator and tracker, replace as needed





Menu Notes

- ▼ 1. Best Practices
 - 1.1. Welcome to Ditch Witch ...
 - 1.2. Module Title Screen
 - 1.3. Module Objectives
 - 1.4. Menu Screen
- ▼ 2. Prepare
 - 2.1. Section 1: Prepare
 - 2.2. Prepare Crew
 - 2.3. Prepare Crew
 - 2.4. Prepare Crew
 - 2.5. Prepare Crew
 - 2.6. Prepare Crew**
 - 2.7. Dig Deeper Trivia
 - 2.8. Prepare Equipment
 - 2.9. Prepare Equipment
 - 2.10. Prepare Equipment
 - 2.11. Prepare Equipment
 - 2.12. Dig Deeper Trivia
 - 2.13. Prepare Jobsite
 - 2.14. Prepare Jobsite
 - 2.15. Prepare Jobsite
 - 2.16. Prepare Jobsite
 - 2.17. Prepare Jobsite
 - 2.18. Prepare Jobsite
 - 2.19. Prepare Jobsite

Best Practices

Resources



Prepare - Crew

Review Bore Plans

- Review Bore Plan with Crew Members
- Review Jobsite Hazards
- An emergency response plan should be created and communicated to entire crew in case of an underground strike.



The plan should include:

- Contacts with phone numbers
- Procedures for each type of event
- Assignment of responsibilities



< PREV

NEXT >



Drag the appropriate description to the matching photo.



Voltage
Stake



Strobe Light



Self Test
Button



Current
Transformer

SUBMIT



HDD BEST PRACTICES

How often should you conduct a walk-over locate and take a depth?

- Every other pipe
- Every half to full pipe length
- Every 30' (9.1m)
- At the start and finish of a bore

SUBMIT



HDD Simulator



HDD Simulator

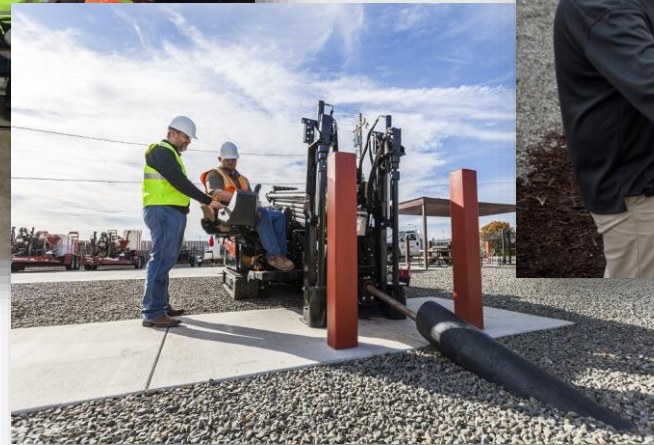
- Safe environment
- Step-by-step instruction
- Portable
- Easy set-up
- Training at the customers convenience
- Employee testing





Underground Construction Technology

International Conference & Exhibition





QUESTIONS?