

# Municipal Case Study

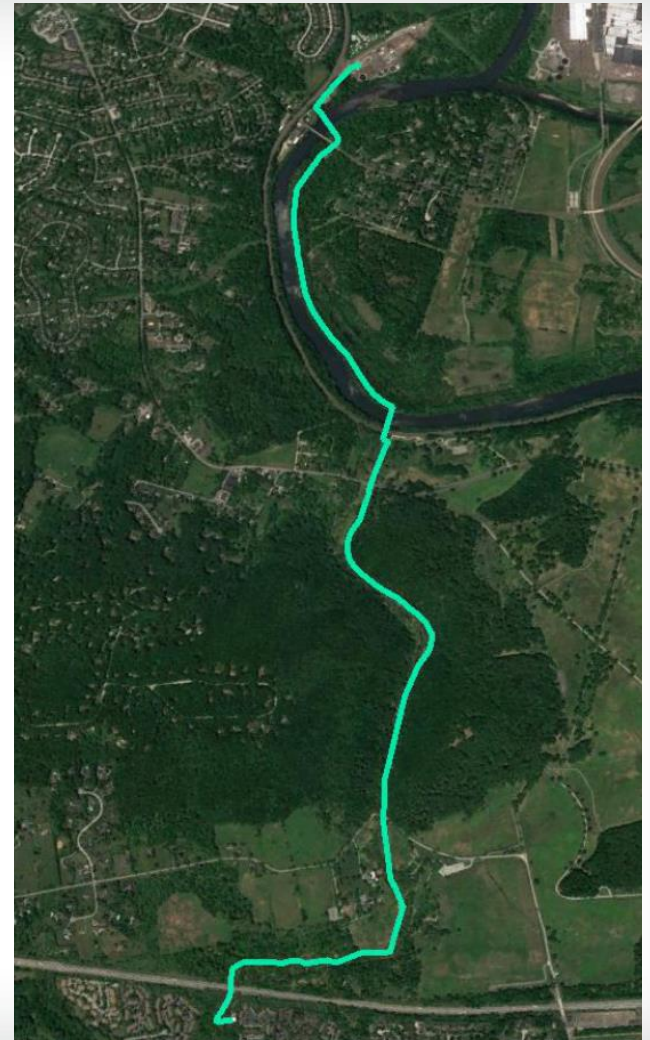
## Valley Forge Emergency Repair





# Background History

- 30" PCCP FM built in the 1970's
- Operates at 50psi
- Pipeline suffered three [failures](#)
- Engineer couldn't reduce flow
- National Park & sensitive areas



# Tite Fitting Structural Liner Solution



- Cheaper & faster than other alternatives while increasing flow
- 30" DR26 & 32.5 Tite Liner
- 18,000' consisting 31 Pulls + 2 River Crossings
- Longest pull: 1500'





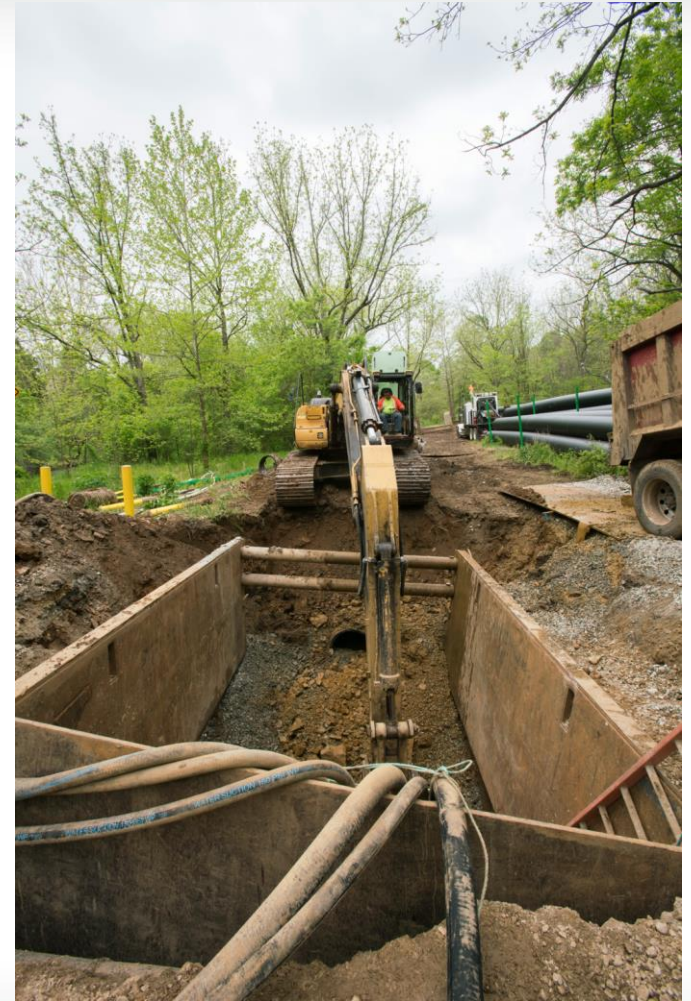
# Excavations

- Utilized custom equipment & materials to minimize pit size
- Fabricated fittings/spools above ground





# Success Working in Congested Areas





# Project Highlights

- Project completed on-time and on-budget
- Zero safety incidents
- Exceeded customer's expectations



# Thank you!

For questions, please  
contact:

Sean Borris  
[sborris@aegion.com](mailto:sborris@aegion.com)  
970-215-4215

