



educational sessions

COST-EFFECTIVE STRUCTURAL CULVERT POINT REPAIR

PRESENTED BY WILL LEBLANC & CHRIS BLOUIN

Project Scope



educational sessions

Multiple 24" Diameter x 48" Length Structural Point Repairs to repair offset and disjointed sections of 24" corrugated HDPE Pipe. Problem area was 200' long, and on a 60% grade

Contractor: Drain Masters, Inc. – Anchorage, Alaska

Project Name: Yosemite Drive Drainage Project

Location: Anchorage, Alaska

Equipment Used



educational sessions

- 18"-24" X 48" Flow Through Packer
- 24" X 48" Structural Point Repair – With Winter Hardener
- Air Regulator
- Portable air compressor



Location



educational sessions

- 200' Section of 24" corrugated HDPE Pipe
- Multiple disjointed and offset joints – 100% water loss over the 200' section.
- 60% grade made open trench repairs unfeasible
- Environmentally sensitive area

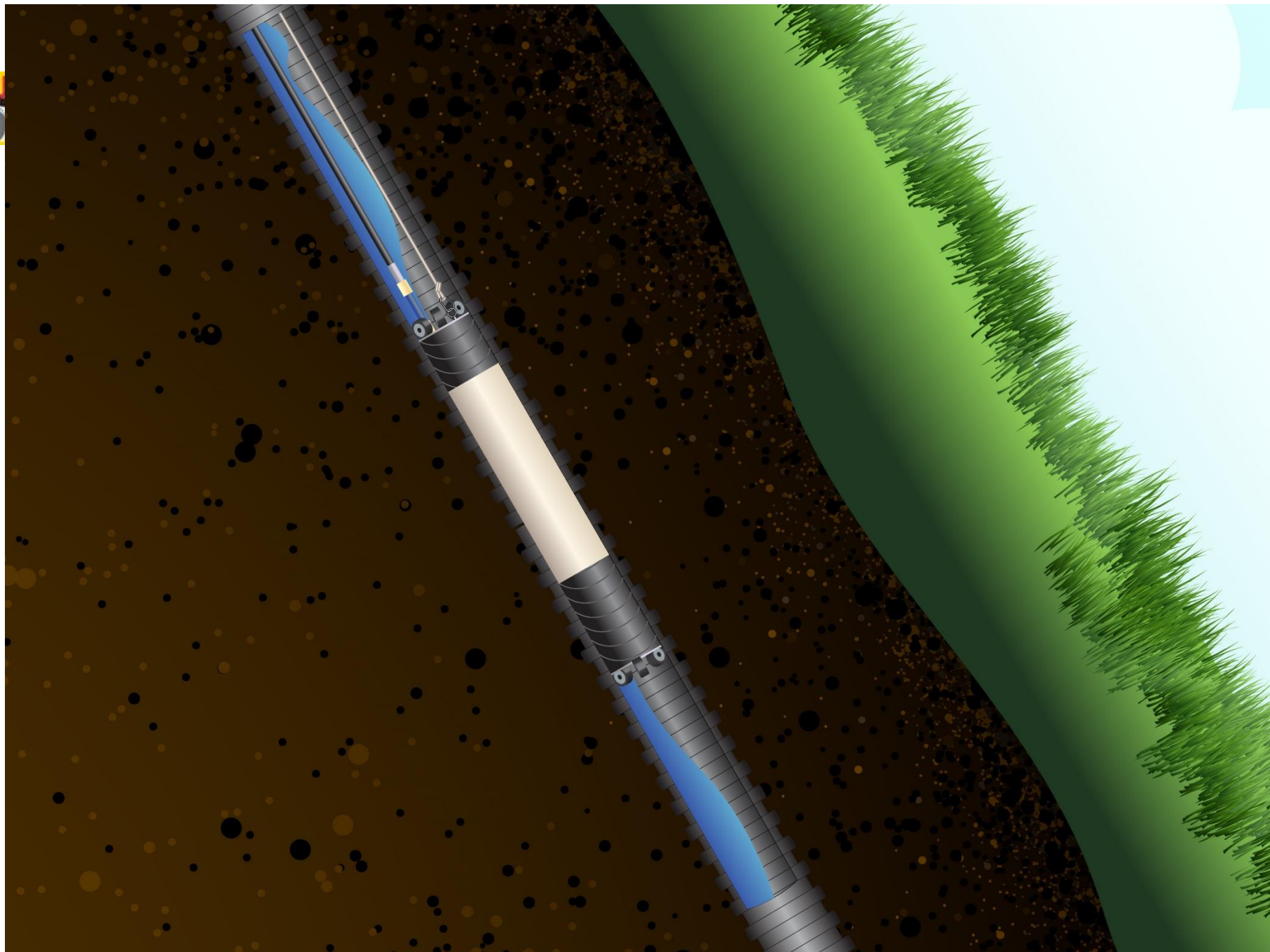


Sample of before repair



educational sessions





Protective Sleeve



educational sessions

- Protective sleeve is placed over the packer and secured with vinyl tape
- Sleeve is sacrificial and is discarded after initial trial run



Locate and Measure



educational sessions

- Camera is used to identify, and locate the exact position/distance of the section in need of repair

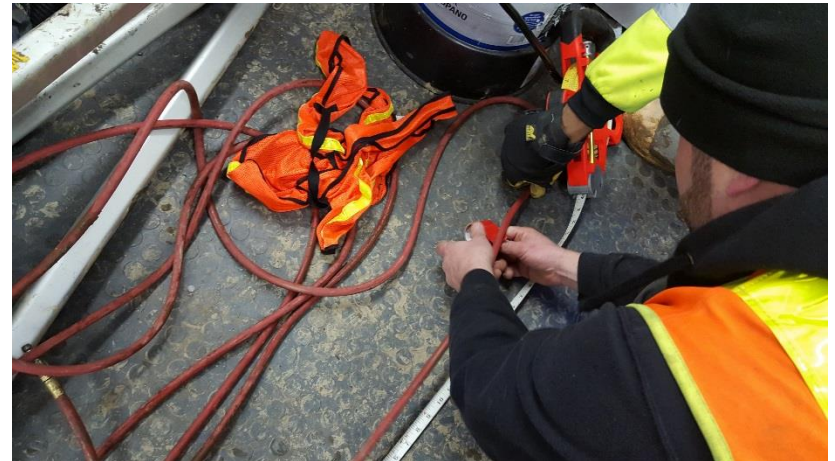


Transfer Measurement



educational sessions

- Measurement is transferred from the camera to the packer air supply



Trial Run



educational sessions

- A trial run is done to identify any challenges in the placement of the packer
- Initial protective sleeve is discarded and a new protective sleeve is placed on the packer

Wet-out of Fiberglass – Side 1



educational sessions

- Premeasured resin bags are mixed and spread on first side of fiberglass



Wet-out of Fiberglass – Side 1



educational sessions



Wet-out of Fiberglass – Side 1



educational sessions



Flip Fiberglass



educational sessions



Wet-out of Fiberglass – Side 2



educational sessions



Fold Fiberglass to Pre Measured Marks



educational sessions



Roll Fiberglass Around Packer



educational sessions



Secure Fiberglass with Provided Zip Ties



educational sessions



Provided Work Station Used to Cradle Packer to the Pipe



educational sessions



Packer is Lowered, Pulled, and/or Pushed into Place



educational sessions



Completion



educational sessions

- PSI is maintained during the curing process (1-3 hours)
- After full cure, packer is deflated, and removed
- Final video inspection of repair section is completed.

Before and After



educational sessions





educational sessions

Questions